



# Bulletin

Volume 93, Number 3

Newton, Kansas

May 2015

## ***From Your President***



Dr. Nancy Bolsen  
KS AAUW President

Dear AAUW Members,

With this newsletter I am finishing my first year as your AAUW State Board President. It has been an exciting and busy year!

One thing I am pleased with is our state board members visits to branches. We have not yet finished visiting all of you, but soon you should be hearing from us if we have not already had our conversation. Thank you to the Branch Boards that visited with us so far.

We continue to update the State Board website: <http://aauw-ks.aauw.net>. Please share your local efforts with us! Also send AAUW mission related articles you have enjoyed; motivating branch news, great programs ideas, other websites to connect to and anything you think would be of importance to share with other branches. I will see that it gets on our website.

At the 2015 Kansas Annual Meeting on the campus of Butler Community College in El Dorado we had outstanding speakers with Catherine Linaweaver, Former Warden with the Federal Prison System and Cordy Galligan, VP Marketing and Business Development from AAUW National. We had a "*Seeds of Growth*" theme related welcome from Dr. Kimberly Krull, President of Butler Community College. Shirley Breeze, Leadership Corps provided significant information on AAUW National updates. Look for all the details further in the newsletter.

During our business meeting we honored branches, elected Dr. Teresa Sullivan, as President-Elect, Louise Ehmke as VP Programs and Carolyn Dwire as Treasurer. I will soon be asking some of you to serve appointed offices in *Public Policy, Diversity and College/University Relations*. Please consider joining the AAUW State Board and be ready to sign on and help our State AAUW and Branches grow.

Don't forget- AAUW National Convention in San Diego-June 18-21. Join the Wave! We have five members going so far. Please consider attending!

Please VOTE for National Officers, Directors, By-Laws and Public Policy initiatives! See page 3 for details.

Wishing you a grand "your favorite kind" of summer and looking forward to our new AAUW year 2015-2016!

With best wishes,

Dr. Nancy Bolsen, A Proud Member of AAUW  
Kansas AAUW State Board President 2014-2016  
785-565-8720 nancybolsen@gmail.com

## **AAUW LEADERSHIP CORPS**

### **NATIONAL REPORT SPRING 2015**

Right now you can vote to **put a WOMAN on the \$20 bill** for 2020. The current choices are Harriett Tubman, Rosa Parks, Eleanor Roosevelt and Wilma Mankiller. Go to <http://www.womenon20s.org/vote2> and VOTE! Share this link with friends!!



**Shirley Breeze**  
Leadership Corps Member

Do you know about **Kansas Women and the Wage Gap**? According to the National Partnership for Women and Families, in Kansas, a woman who holds a full-time job is paid, on average, \$35,869 per year while a man who holds a full-time job is paid \$45,463 per year. This means that women in Kansas are paid 79 cents for every dollar to men, amounting to a yearly wage gap of \$9594 between men and women who work full-time in the state.

If this gap were eliminated, on average, a working woman in Kansas would have enough money for approximately:

- 76 more weeks of food for her family,
- Eight more months of mortgage and utilities payments,
- Nearly 13 more months of rent or
- 2,947 additional gallons of gas.

See the full Kansas fact sheet with references to above figures at [www.nationalpartnership.org](http://www.nationalpartnership.org).

**REMINDER: Social Security** will celebrate its 80th year of existence on August 14, 2015. This program provides substantial support for millions of women who were "stay at home" moms or had a limited work history outside the home. It is estimated that more than half of these women would fall into poverty without these benefits; 48 percent of all non-married women age 65 and older get 90 percent or more of their income from Social Security

Be sure to get your VOTE in for the National AAUW by-laws.

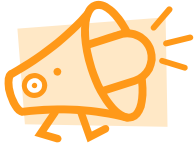
*Shirley Breeze, Leadership Corps Member*  
[sbreeze@mindspring.com](mailto:sbreeze@mindspring.com)



### **AWARENESS POINT TO ALL BRANCHES** **FROM NATIONAL AAUW FUNDRAISING NEW GUIDELINES,** **July 2014**

*Can AAUW provide gifts and donations to local agencies? Many branches deliver important programs in their community and have been volunteering with agencies such as local schools, women's shelters, or 'girls towns.' However some branches want to start taking up collections to give money to these organizations.*

This creates a conflict of interest and confusion in the community. AAUW is a charity, and branches' philanthropic priority should be AAUW and the work of the branch. Branches may fundraise to cover the expense of branch activities, such as purchasing textbooks that the members use for tutoring programs or transporting women to job interviews. Branches may collect and donate items such as clothing and personal toiletries to other charities. But no cash or checks can be collected for other charities at branch meetings, and such gifts cannot be encouraged through AAUW communications. Branch leaders can invite representatives from other organizations to speak as part of a program, and the branch may provide a modest fee (if you normally give honoraria to speakers.)



## **AAUW Public Policy** AAUW Public Policy

Here are further links, as a follow-up from our February 2015 Bulletin that you and all concerned with equity can advocate for by being knowledgeable and aware of the current status of these important issues.

### **Education**

AAUW supports a strong system of public education that promotes gender fairness, equity, and diversity.

- [Career and technical education](#)
- [Charter schools](#)
- [Common core standards](#)
- [Disabilities](#)
- [Education and training in welfare/Temporary Assistance for Needy Families](#)
- [Higher education](#)
- [No Child Left Behind Act](#)
- [School vouchers](#)
- [Single-sex education](#)
- [Science, technology, engineering and mathematics \(STEM\) education](#)
- [Sexual harassment and violence in school](#)

### **Title IX**

AAUW supports vigorous enforcement of Title IX and all other civil rights laws pertaining to education.

- [Title IX](#)
- [Equity in school athletics](#)
- [Sexual harassment and violence in school](#)
- [Single-sex education](#)

## **AAUW FUNDS and YOU!**

Ruth Keroher AAUW Fund AND Gretchen Morgenstern's AAUW Fund are now endowed. **When**

**donating to AAUW Funds, please designate as "AAUW Funds Unrestricted" to allow other funds to be completed.** You can find a list of Funds at [www.aauw.org](http://www.aauw.org).



**Your individual or branch gifts to AAUW Funds should be sent to Eileen Armstrong, Action Fund Chair.** She will forward to National so we can keep track of Kansas contributions. Please send before December 15 to be counted as a contribution in 2015.

Eileen's address is 10143 Flint St., Overland Park, KS 66212.

## **This YOUR TIME to VOTE on bylaw changes.**

See your latest Outlook for voting directions or head to [www.aauw.org](http://www.aauw.org) for details.

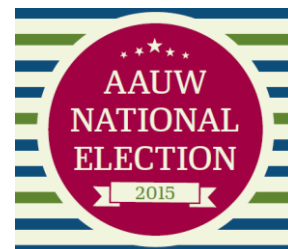
It's time to vote for **AAUW National Officers, Directors, Bylaws and Public Policy agenda.** Your important voice (VOTE) is critical to strengthening our AAUW organization.

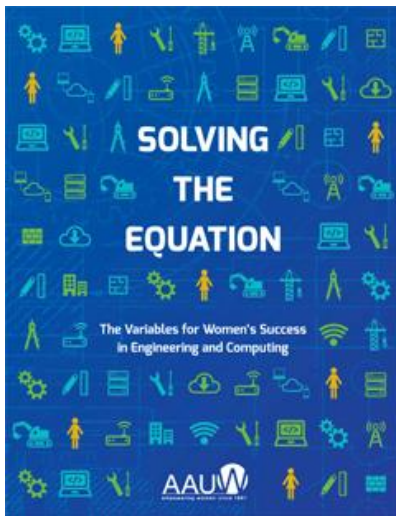
### **What to do and how to do it!**

- First review the candidates, bylaws and public policy information located on pages E1-E20 in your Spring/Summer AAUW Outlook or online at [www.aauw.org/resource/national-election/](http://www.aauw.org/resource/national-election/)
- Check for a recently received April 16 AAUW email, click on and vote (easiest way to vote)
- Additional options, you can also find your PIN and AAUW membership number on the back page of the Spring/Summer AAUW Outlook, which is needed to VOTE and just go online.
- You can vote electronically, which is best, or on paper.

### **Important 2015 Voting Dates**

- ✓ NOW - Voting begins online
- ✓ May 26 - Deadline for mailing paper ballot; ballots must be postmarked by 11:59 p.m. to be counted
- ✓ June 19 - Online voting ends at 9 p.m. PDT
- ✓ June 20 - Announcement of newly elected candidates, bylaw changes, and public policy





## Just Released:

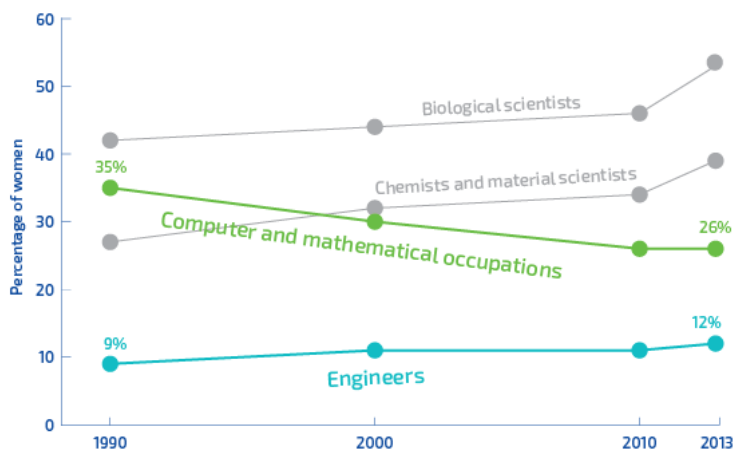
This new AAUW publication is too important not to be widely shared. Please get copies and distribute this to your branch, community college/universities, high schools and community leaders.

*Solving the Equation: The Variables for Women's Success in Engineering and Computing* asks why there are *still* so few women in the critical fields of engineering and computing — and explains what we can do to make these fields open to and desirable for *all* employees.

More than ever before, girls are studying and excelling in science and mathematics. Yet the dramatic increase in girls' educational achievements in scientific and mathematical subjects has not been matched by similar increases in the representation of women working as engineers and computing professionals. Just 12% of engineers are women, and the number of women in computing has fallen from 35% in 1990 to just 26% today.

Download from the [aauw.org](http://aauw.org) website or [you can also order a printed report on ShopAAUW](#).

WOMEN IN SELECTED STEM OCCUPATIONS, 1990–2013



## Give a Grad a Gift - It's Graduation Time!

Here is a great gift for a graduate. AAUW members can give recent college graduates a free, one-year AAUW membership within two years of graduation, at no cost to you or them. You should do this no matter what! Membership in **AAUW is open to any graduate holding an associate or equivalent, baccalaureate, or higher degree from a regionally accredited institution.**

[Give the gift of AAUW membership now](#)

**With a gift of AAUW membership, you will...**

- Expose the grad to the power that comes from belonging to a national women-led organization of more than 170,000 members and supporters who believe in and advance equity and education for women and girls.
- Expand their networking opportunities through career development opportunities and community action projects.
- Keep them current on the events and people that affect their life as they receive *Mission & Action*, *AAUW Outlook*, Action Network alerts, and more.
- Increase their buying power with access to member only discounts.



## 2105 Annual Meeting Recap from Barbara Gatewood, Manhattan Branch



“**Seeds of Growth**” was the theme of the **Kansas AAUW 2015 Annual Meeting** at Butler Community College in El Dorado on April 11. It energized 31 participants from six branches (El Dorado, Manhattan, Newton, Salina, Shawnee Mission, and Wichita) with inspiring keynote speakers, a goal-focused board report by State President Nancy Bolsen, installation of officers. Butler President Kimberly Krull provided opening remarks and stressed the importance of “making a difference in peoples’ lives.”

Catherine Linaweaver’s inspirational talk, “**From Teacher to Warden: the Career Change of One Woman,**” provided insight on how a petite woman from Girard, Kansas, and a Pittsburg State education graduate advanced quickly through the male-dominated federal prison system to become the warden at the Metropolitan Correctional Center (MCC) in Chicago and MCC New York. In 2012, she received Warden of the Year. Catherine retired in 2014, after 24 years of service in the Federal Bureau of Prisons. She experienced adversity early in her career, but continued to work hard and focus on her desired career path. Women have made many strides, but often “work themselves out” and take on too much responsibility. Research shows that women in senior positions usually outscore men, but often avoid high risk/high visibility assignments. Her recommendation for success was to “get out of your comfort zone.”



Retired Prison Warden Catherine Linaweaver, KS AAUW President Nancy Bolsen and AAUW Mktg. VP Cordy Galligan

Cordy Galligan, AAUW VP of Marketing and Business Development, presented, “**The Power of One AAUW,**” centered on the idea that we work at different levels – branches, regions, states, and nationally, but we are all one! Cordy stressed using AAUW’s extensive resources, such as *Programs in a Box*, videos, PowerPoint presentations, online learning modules, and fact sheets. Over 1100 watch parties on “Solving the Equation: The Variables for Women’s Success in Engineering and Computing” were held on March 26. She encouraged

contacting her or the Branch Program Resource Committee at: [program@aauw.org](mailto:program@aauw.org), [galliganc@aauw.org](mailto:galliganc@aauw.org), or [connect@aauw.org](mailto:connect@aauw.org). She noted that the anticipated growth area for AAUW is in student organizations. An easy fundraising idea for branches is hosting AAUW-collaborated Princeton Reviews. It has dozens of valuable turnkey programs that help students prepare for college or graduate school applications. They’ll provide the content and speaker, and the branch provides the location.

The **newly elected state officers** ( as pictured l to r) were Louise Ehmke, VP - Program; Teresa Sullivan, President-Elect; and Carolyn Dwire, Treasurer. Nancy Bolsen and Shirley Breeze installed the new officers.





Teresa Sullivan, State Vice President-Program, (left) presented **Kansas Star Branch Certificates** to the Manhattan, Salina, and Shawnee Mission branches in recognition of their accomplishments made in 2014-15 to advance the mission of AAUW.

### 2015 Annual Meeting – AAUW FUNDS REPORT

**AAUW Funds awards** were presented by Eileen Armstrong, State Fund Chair. The following individuals were recognized as the newest members to the KS AAUW Sunflower Garden:

Shirley Goering – Newton Branch  
Barbara Neufeld – Shawnee Mission

Mavis Fletcher - Manhattan  
Norma Scopellati – Shawnee Mission.

Branches were honored for their top giving to AAUW Funds in 2014.

**Recognition of branches' contributions (all figures include contributions from particular branches and their individual members) were:**

- Total Giving:
- 1<sup>st</sup> Shawnee Mission
- 2<sup>nd</sup> Wichita
- 3<sup>rd</sup> Newton
- 4<sup>th</sup> Emporia
- 5<sup>th</sup> Lawrence



**Total overall AAUW Funds contribution per capita in the state:**

- Per Capita Giving:
- 1<sup>st</sup> Shawnee Mission
- 2<sup>nd</sup> Goodland
- 3<sup>rd</sup> Newton
- 4<sup>th</sup> El Dorado
- 5<sup>th</sup> Wichita



### Leaves from the Branches -Notes and Events from your AAUW Branches

#### Salina

In March the branch celebrated Women's History Month by partnering with the Salina League of Women Voters and the Salina Art Center to present *Iron Jawed Angels*, a film starring Hilary Swank portraying Alice Paul strategizing the events, which led the successful campaign that resulted in women's right to vote in 1920. The movie was offered free and opened to the public.

#### Manhattan

The STEM Institute for youth grades five through eight is offered each summer at K-State. The cost for students is \$100 for four weeks. This year, thanks to branch member Marilyn Fox's advocacy, the branch will sponsor six scholarships for sixth grade girls to attend the STEM Institute. Girls are still under-represented in STEM fields and even at the STEM Institute. The branch responded to make the camp accessible to kids who might otherwise not be able to go and especially to girls.

#### Shawnee Mission

This branch announced 5 students from the Johnson County Community College Student Affiliate Branch received scholarships from AAUW National to attend the NCCWSL conference in May. These scholarships were in addition to the \$1000 scholarship given by the Shawnee Mission branch to help finance their trip.

#### Goodland

A former Goodland High School student, now a junior at FHSU has been selected to go to the National Conference for College Women Student Leaders (NCCWSL) sponsored by AAUW. When this young woman was in junior high, the Goodland AAUW Branch sponsored her to attend a science camp held during the summer at FHSU. Good News! Goodland Branch also reported that AAUW is mentioned as a connector to "civic engagement" in a concert program at FHSU.



## The Lasting Legacy of One Gram of Radium

*Selected paragraphs from an article written by AAUW President [Patricia Fae Ho](#).*

On a fine autumn Sunday in Warsaw, we began our visit of Poland, “following in the footsteps of Marie Skłodowska Curie.” Our AAUW delegation had the exciting opportunity to celebrate the significant achievements of the Polish-born scientist, who won the Nobel Prize in physics and chemistry and left a legacy of scientific research in her native country.

We were warmly acknowledged at each of our stops for the generous donation of funds by our predecessor, the [Association of Collegiate Alumnae \(ACA\)](#), for the purchase of Madame Curie’s gram of radium. This gift allowed the eminent scientist to continue her relentless work and to facilitate establishment of the Radium Institute for research. From this followed the founding of the Cancer Centre and Institute of Oncology, the government-funded, largest cancer research and treatment facility in Poland.

But what about the success rates of women in STEM fields in Poland? Although women comprise 65 percent of university students, only 37 percent of technical university students are female. And according to the Perspektywy Education Foundation, that number is up from just 29 percent in 2008. The foundation is committed to advancing gender equality and supporting women’s careers in technology through mentoring programs, research in career choices, and campaigns to engage girls in STEM.

What will the future hold for the women studying technical fields? According to Malgorzata Fuszara, secretary of state for equal treatment in the chancellery of the prime minister, gender stereotypes still exist, girls and women face obstacles in STEM education, and men still dominate the upper echelons.

Indeed, in all our conversations with professional women in Poland, they told us that these issues — exacerbated by difficulties with work-family balance and lack of child care support — have posed great challenges to them. They were somewhat comforted by the fact that similar issues confront women in the United States. However, we all agreed that we must persevere together to secure women’s equity as a crucial aspect of global social justice.



### **AAUW CALENDAR 2015**

May 28-30 NCCWSL

June 18-21 National Convention, San Diego

June 30 Shape the Future 2014-15 Free  
Memberships Expire

July 1 2015-16 AAUW YEAR BEGINS

August 14 Social Security 80th Anniversary

August 26 *Women's Equality Day*



Kansas AAUW Bulletin  
920 Lazy Creek Drive  
Newton, KS 67114-8909

BULK RATE  
U.S. POSTAGE  
**PAID**  
Permit No. 9  
Ottawa, KS  
66067

**AAUW - Advancing equity for women and girls through advocacy, education, philanthropy and research.**

### AAUW Action Fund Mission

The AAUW Action Fund advances equity for women and girls through member activism and voter mobilization.

Since 1881, AAUW has been the nation's leading voice promoting education and equity for women and girls.

The AAUW Action Fund was established July 1, 2009, following a strategic restructuring of AAUW, the AAUW Educational Foundation, and the AAUW Leadership and Training Institute. The AAUW Action Fund supports AAUW's continuing goal of breaking through barriers for women and girls, and it does so through member activism and voter mobilization. Both organizations have a nationwide network of nearly 100,000 members, 1,000 branches, and 500 college/university institution partners.

A [briefing](#) on the AAUW website provides detailed information about the structure of AAUW, the AAUW Action Fund, AAUW branches, and members.

**AAUW Action Fund**  
1111 Sixteenth St. NW  
Washington, DC 20036  
800/326-AAUW (2289)  
[connect@aauw.org](mailto:connect@aauw.org)

In principle and in practice, AAUW values and seeks a diverse membership. There shall be no barriers to full participation in this organization on the basis of gender, race, creed, age, sexual orientation, national origin, disability, or class.



of Kansas  
**MAY 2015**  
**Bulletin**



### CONTACTS:

AAUW National Office:

1111 Sixteenth St. N.W. , Washington, DC 20036

[www.aauw.org](http://www.aauw.org)

[connect@aauw.org](mailto:connect@aauw.org)

800/326-AAUW (2289) 10:00 a.m. to 5:00 p.m.

202/785-7700 8:30 a.m. to 5:00 p.m.

Fax: 202/872-1425

Kansas AAUW Website & Email

<http://aauw-ks.aauw.net/>

[aauwstateboard@gmail.com](mailto:aauwstateboard@gmail.com)

**If you do not have email,  
you will continue to receive your Bulletin via  
the US Postal Service.**

**Members: Please advise of email or address changes  
to [lbjbo@cox.net](mailto:lbjbo@cox.net) or above gmail.**