



# Bulletin

Volume 92, Number 2

Newton, Kansas

February 2015

## From Your President



Dr. Nancy Bolsen  
KS AAUW President

Dear AAUW Members,

As I write this note to you, time seems to have passed very quickly. It's just like we got started-- and it is now time for our annual meeting and to make our plans for the next year.

One exciting thing to report is that the AAUW Kansas State Board Members are busy visiting the Kansas AAUW Branches. We hope to visit all of you by April 1. If you have not received a call or email, expect one soon.

This second issue of the year comes filled with information about the **KANSAS Annual Meeting** held this year on **Saturday, April 11 in El Dorado**. The committee is working hard to pack a lot of information and activities into this year's program. So please review the registration and other information for the *Seeds for Growth* themed meeting. You can also soon find the registration form on the AAUW Kansas State Board website at <http://aauw-ks.aauw.net/>. Your participation is needed and greatly appreciated.

The AAUW National Convention is in San Diego, June 18-21, at the Sheraton Hotel and Marina. I hope many of you can attend both AAUW events. I will be attending my first AAUW National meeting.

I have been working on the AAUW archives in the Riley County museum the last several months. One thing that I found in the 1960-1970's Kansas Bulletin was the sharing of Branch happenings under the headline *Leaves from the Branches*. I am sharing

news from the Manhattan Branch and want you to share what your Branch is doing in the next Bulletin! Send your information to Lynnette Redington, Kansas Bulletin Editor at [lbjbo@cox.net](mailto:lbjbo@cox.net) by April 24.

On a sad note I share with you that I have officially disbanded eleven branches this year. This reflects not only our busy lives, but also the changing interests and activities of young women in joining organized groups. As stated so well by the Virginia AAUW co-presidents, "It is always sad to lose a member, much less a branch. We continue to work hard to spread the word about AAUW and bring new members into this relevant organization."

See you in El Dorado!

Nancy Bolsen, KS AAUW President  
A Proud AAUW Member  
[nancybolsen@gmail.com](mailto:nancybolsen@gmail.com)  
785-565-8720

### ANNUAL MEETING DETAILS

#### *Special Sale Items for and by YOU!*

Pen and ink prints of the KU Campanile (a great gift for a graduate) and the Kansas City, MO Country Club Plaza as well as other scenic landscapes from artist, Cindy Fauntz, a KU graduate, will be for sale for \$5 and \$10 (signed/numbered). Proceeds go to the Kansas State AAUW Board Fund.

There will be **tables available for branches to display your sale items** to raise branch funds. Bring those items you sell locally. A **basket for the silent auction** would be very welcomed too!

#### *Share a Ride – Get Reimbursed*

\*\*\*\*KS AAUW will reimburse mileage to and from the annual meeting for one car per branch at the KS AAUW mileage rate.\*\*\*\*



## AAUW LEADERSHIP CORPS NATIONAL REPORT WINTER 2015

The **National Convention** promises to be a life-changing event for those in attendance. Ask anyone who attended in New Orleans; materials gathered and education acquired are still being used by those attendees two years later. The Convention is initiating a different format for the formerly-called Special Interest Groups. The new name is **Daily Dialogues**. Two sessions are scheduled--Saturday, June 20, 4-5 pm and Sunday, June 21, 7 to 8 am.



**Shirley Breeze**  
Leadership Corps Member

**Social Security** will celebrate its 80th year of existence on August 14, 2015. This program provides substantial support for millions of women who were "stay at home" moms or had a limited work history outside the home. It is estimated that more than half of these women would fall into poverty without these benefits; 48 percent of all non-married women age 65 and older get 90 percent or more of their income from Social Security

This is an ideal time to **recruit new members**. National dues are half-price until March 15.

**March Women's History Month** is an excellent time to refresh members about all the accomplishments of women throughout history. AAUW has a new Program in a Box (Women Their Rights and Nothing More) for use by educators to plan units on women's history.

Branches and states are encouraged to establish a **Diversity position on their boards**, if they do not already have one.

AAUW will release its newest research report, *Solving the Equation: Women in Engineering and Computers*, on March 26. There is to be a public press conference for the event.

The Institute for Women's Policy Research is to update its well-respected state report **Fact Sheets** in mid-2015. These are invaluable tools to promote women's equity. Watch for them!

**Equal Pay Day April 14, 2015**, is right around the corner. The new figures indicate that the pay gap has virtually not moved in the last few years and currently stands at 78 cents nationally. The figure for KS is 79 cents; one cent above average. If the current pace continues, it will be 2058 before men and women reach parity. *The Simple Truth About the Gender Pay Gap 2015*, the valuable report on pay equity, is in the process of being updated.

The **National Women's History Museum** is finally on the way to becoming a reality, after 16 years of hard work. On December 4, 2014, the Senate passed the National Defense Authorization Act, which included a piece of legislation to establish a commission to study the creation of the museum in Washington DC. A museum to house and display artifacts about women is an important step to establish the credibility of women's contribution to this country's successes.

There is a new plan to **move CEDAW forward**. Efforts are being made to secure passage of CEDAW in local city, county and other jurisdictions. Watch for additional information soon.

Make your voices heard in our **National Officer Elections**. Check the dates for the various methods of voting. The list of candidates can be accessed from the website. Check out the list of women running for national office.

**JOIN THE WAVE: PLAN TO ATTEND THE NATIONAL CONVENTION IN SAN DIEGO, JUNE 18-21, 2015.**

*Shirley Breeze, Leadership Corps Member*  
[sbreeze@mindspring.com](mailto:sbreeze@mindspring.com)

### DISBANDED AAUW BRANCHES IN KANSAS

Atchinson	Emporia	Garnett	Hutchinson	Junction City	Lawrence
Osawatomie-Paula		Ottawa	Pratt	Topeka	Ulysses



# seeds for Growth



**Annual Meeting**  
**April 11, 2015– El Dorado**  
**8:30AM – 3:00PM**

## The WHO, WHAT AND WHERE:

**Who:** YOU and anyone you know interested in women’s issues!

**What:** 2015 KS AAUW Annual meeting with the following headliners:



Catherine L. Linaweaver, retired Warden- Federal Bureau of Prisons

Cordy Galligan, Vice President, Marketing and Business Development, National AAUW

AND...

Election of officers for Membership VP, Treasurer, Secretary and Pres- Elect.

Silent Auction & Sale Tables (Bring your checkbooks to support AAUW!)



**Where:** Butler Community College-Hubbard Welcome Center, 901 S. Haverhill Road, El Dorado

**DIRECTIONS:** Haverhill Rd intersects Central Ave (KS Hwy. 254). Welcome Center is across from Drive-In Theater.

**Doors Open at 8:30AM with Registration and Refreshments. Adjourns at 3:00PM.**

---

---

**SEEDS FOR GROWTH REGISTRATION FORM**  
**2015 KS AAUW ANNUAL MEETING - APRIL 11**



Name \_\_\_\_\_

Branch \_\_\_\_\_

Address \_\_\_\_\_

Street/P.O. City State Zip

**Please indicate your status as an AAUW member for the credential information by checking all the following designations appropriate to you.**

- |   |   |  |
|---|---|--|
| <input type="checkbox"/> Branch Delegate    | <input type="checkbox"/> Association Board Member | <input type="checkbox"/> 50 Year Member            |
| <input type="checkbox"/> Alternate Delegate | <input type="checkbox"/> Branch President         | <input type="checkbox"/> Student Affiliate         |
| <input type="checkbox"/> Branch Member      | <input type="checkbox"/> Kansas State Board       | <input type="checkbox"/> University/College Member |
| <input type="checkbox"/> Member-At-Large    | <input type="checkbox"/> Former State President   |  |

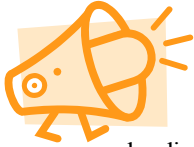
**PLEASE NOTE ANY DIETARY RESTRICTIONS:** \_\_\_\_\_

**Registration due by FRIDAY, March 27, 2015**

**COST: \$25.00 per attendee**  
**(Includes snacks & lunch & materials)**

Make checks payable to **AAUW Kansas**

Mail registration form and check to:  
Carolyn Dwire, KS AAUW Treasurer  
700 N. Washington, El Dorado, KS 67042



## **AAUW Public Policy**

Advocacy isn't just about AAUW

lending our name to an issue or speaking up on Capitol Hill. Advocacy is about AAUW members and all citizens concerned with equity being knowledgeable and aware of the current status of important issues.

For more information on our advocacy efforts, select a policy topic below or see AAUW's [Public Policy Program](#).

For further information on how you can influence the debate, visit [AAUW's Action Network](#).

For information about our federal legislative priorities for the 114th Congress, download our [legislative priorities document](#).

### **Civil Rights**

AAUW advocates for equality, individual rights, and social justice for a diverse society.

- [Affirmative action](#)
- [Equal Rights Amendment](#)
- [Federal judicial nominations](#)
- [Hate crimes prevention](#)
- [Human trafficking](#)
- [Lesbian, gay, bisexual, and transgender issues](#)
- [Reproductive rights](#)

### **Economic Security**

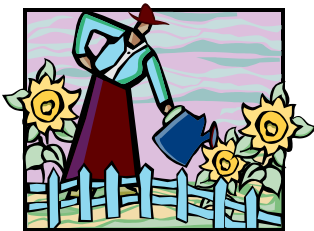
AAUW advocates for all women to achieve economic self-sufficiency.

- [Health care](#)
- [Pay equity](#)
- [Paid sick days](#)
- [Retirement security](#)
- [Social Security privatization](#)
- [Work-life balance](#)

More links to come in May 2015 Bulletin.

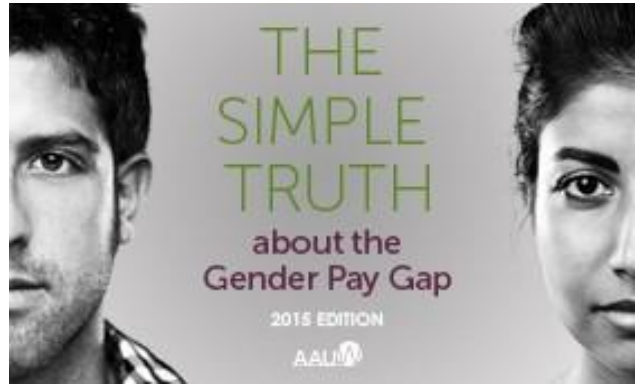
### ***Perfect for the SEEDS OF CHANGE***

#### ***Annual Meeting...***



#### **SUNFLOWER GARDEN**

If your branch or you as an individual wishes to recognize someone with a sunflower (with a corresponding \$25 donation) in the KS AAUW Sunflower Garden at the Annual KS AAUW Meeting on April 11, **please inform Eileen Armstrong**, KS AAUW Funds Chair, 10143 Flint St., Overland Park KS 66212 or [dearmst44@gmail.com](mailto:dearmst44@gmail.com)



### **How to "Celebrate" Equal Pay Day**

Sometimes we find ourselves wishing for more than 24 hours in a day or more than seven days in a week, but more time is not always better: It takes women about 15 months to earn what men earn in 12, thanks to the gender pay gap.

We "celebrate" this occasion every April on a day known as [Equal Pay Day](#), which is the symbolic day when women's earnings (78 cents to men's dollar, 79 cents to men's dollar in Kansas 2014) finally catch up to men's earnings from the previous year. Equal Pay Day is a powerful occasion to raise awareness and organize action around the gender pay gap in our communities.

**Equal Pay Day 2015 will fall on Tuesday, April 14, so mark your calendar!**

Make your plans to recognize this day with your Branch in a special way:

- ✓ Give out equal Pay Day bars and talk with friends and family about the **Equal Pay** reality
- ✓ Highlight **Equal Pay Day** at your Branch meeting
- ✓ Organize a campus **Equal Pay Day** rally at a campus near you
- ✓ Get your city mayor to issue an **Equal Pay Day** proclamation
- ✓ Submit a Letter to the Editor about **Equal Pay Day**

### **Kansas Star Branch**



#### **Be a Star for 2014-15**

Document your Branch events, projects, donations, and community visibility your

Branch gained during the 2014-15 year and become a Kansas Star Branch! It is not necessary to achieve all Stars, simply tell us what accomplishments were made this year.

**Deadline for submission is April 1, 2015**

Recognition will be given at the Kansas Annual Meeting. Applications are available by contacting Terri Sullivan at 913-722-2861 or [sullivan.teresa@att.net](mailto:sullivan.teresa@att.net).

# PRES. CHAT...

## What's your wish?

In 2014-2015, AAUW of Kansas will celebrate 95 years of being an AAUW state organization advocating for women and girls! What I find frustrating is that some of the issues for which we worked those many years ago are still unfinished, but relevant today.



What is your wish for AAUW of Kansas as we celebrate our 95th birthday? Send your wishes to me, Nancy Bolsen, ([nancybolsen@gmail.com](mailto:nancybolsen@gmail.com)). Your wishes will be displayed at the state conference, April 11, 2015, in El Dorado. Join us there as we celebrate our heritage and get fired up to continue our work in the coming years.



### Leaves from the Branches

**Manhattan** Branch plans to bring AAUW's *Elect Her-Campus Women Win* to the K-State campus in the fall of 2015. It is the only program in the country that encourages and trains college women to run for student government and future political office. The application will be submitted in September and notification will be received in early October.

**Shawnee Mission** Branch sponsored Ramona Nelson to attend the NCWSSL conference in June 2014. Ramona is the Johnson County Community College student who has spearheaded the start of the new AAUW Student Affiliate branch at JCCC. Ramona is a past graduate of Kansas City Kansas Community College which also has an AAUW student affiliate branch.

### Join AAUW's Virtual Graduate School Fair!

Help students you know find their next step! Share with your C/U Partnerships!



**March 30, 2015**  
2-6 PM. EST  
**Location:**  
Your computer  
([Register below.](#))

**Registration**  
**Deadline:** March 18, 2015

Join [AAUW's Virtual Graduate School Fair](#), hosted by StudentPerch. The virtual fair connects candidates with a broad range of graduate programs, such as public policy, business, and the science, technology, engineering, and math fields. Take advantage of this convenient way to discuss opportunities without ever leaving your desk!

#### Participants will have access to the following:

- Private one-on-one chat capability
- Student attendee profiles (including résumé and LinkedIn profile)
- Exhibitors' branded virtual booths
- Graduate program names on pre-event welcome page
- FREE for students/Exhibitor prices will vary. AAUW college/university partner members will receive a discounted rate.




### *Join the Wave* *AAUW National* *Convention* *in San Diego*

See the November 2014 KS Bulletin for details or go to [www.aauw.org](http://www.aauw.org).

State Board members Carolyn Dwire, Nancy Bolsen, and Terri Sullivan have signed up to attend. If you wish to be a roommate, contact us at [aauwstateboard@gmail.com](mailto:aauwstateboard@gmail.com) or Nancy at 785-565-8720.

### **AAUW CALENDAR 2015**

- March Women's History Month
- March 8 *International Women's Day*
- Thru March 15 Half off National Dues
- March 16 Branch Member Recruitment for 2015-2016 Begins
- March 26 Research Report *Solving the Equation* Launched
- March 27 **REGISTRATION DUE for KS AAUW ANNUAL MEETING (see page 3)**
- Thru March 31 Early-bird National Convention Rates
- April Sexual Assault Awareness Month
- April 1 First Day to Request a Paper AAUW Ballot
- KS Star Branch DUE (see page 4)**
- April 11 KS AAUW Annual Meeting, El Dorado
- April 14 *Equal Pay Day*
- April 15-June 19 National Election Voting Days
- April 24 KS AAUW Bulletin items due to [lbjbo@cox.net](mailto:lbjbo@cox.net) in .doc or .docx format.
- May 14-16 Global Summit of Women
- May 28-30 NCCWSL
- June 18-21 National Convention, San Diego
- June 30 Shape the Future 2014-15 Free Memberships Expire
- August 14 Social Security 80th Anniversary
- August 26 *Women's Equality Day*

 Kansas AAUW Bulletin  
920 Lazy Creek Drive  
Newton, KS 67114-8909

BULK RATE  
U.S. POSTAGE  
**PAID**  
Permit No. 9  
Ottawa, KS  
66067

**AAUW - Advancing equity for women and girls through advocacy, education, philanthropy and research.**

#### AAUW Action Fund Mission

The AAUW Action Fund advances equity for women and girls through member activism and voter mobilization.

Since 1881, AAUW has been the nation's leading voice promoting education and equity for women and girls.

The AAUW Action Fund was established July 1, 2009, following a strategic restructuring of AAUW, the AAUW Educational Foundation, and the AAUW Leadership and Training Institute. The AAUW Action Fund supports AAUW's continuing goal of breaking through barriers for women and girls, and it does so through member activism and voter mobilization. Both organizations have a nationwide network of nearly 100,000 members, 1,000 branches, and 500 college/university institution partners.

A [briefing](#) on the AAUW website provides detailed information about the structure of AAUW, the AAUW Action Fund, AAUW branches, and members.

**AAUW Action Fund**  
1111 Sixteenth St. NW  
Washington, DC 20036  
800/326-AAUW (2289)  
[connect@aauw.org](mailto:connect@aauw.org)

In principle and in practice, AAUW values and seeks a diverse membership. There shall be no barriers to full participation in this organization on the basis of gender, race, creed, age, sexual orientation, national origin, disability, or class.



of Kansas  
**February 2015**  
**Bulletin**

**MARCH 27 – KS ANNUAL MTG REGISTRATON DUE- See page 3.**

#### CONTACTS:

AAUW National Office:

1111 Sixteenth St. N.W. , Washington, DC 20036

[www.aauw.org](http://www.aauw.org)

[connect@aauw.org](mailto:connect@aauw.org)

800/326-AAUW (2289) 10:00 a.m. to 5:00 p.m.

202/785-7700 8:30 a.m. to 5:00 p.m.

Fax: 202/872-1425

Kansas AAUW Website

<http://aauw-ks.aauw.net/>

[aauwstateboard@gmail.com](mailto:aauwstateboard@gmail.com)

**If you do not have email,  
you will continue to receive your Bulletin via  
the US Postal Service.**

*Members: Please advise of email or address changes.*