



# Bulletin

Volume 92, Number 1

Newton, Kansas

November 2014

## From Your President



Dr. Nancy Bolsen  
KS AAUW President

*“The American Association of University Women (AAUW) is the nation’s leading voice promoting equity and education for women and girls.*

*Since our founding in 1881, AAUW members have*

*examined and taken positions on the fundamental issues of the day — educational, social, economic, and political. “*

I support AAUW’s mission and I am very honored to serve as your 2014-2016 AAUW Kansas State Board President, helping our members carry out the mission of AAUW in Kansas. In this first year, your State Board members met in September at the Kansas Wesleyan University campus for a retreat to establish goals for the 2014-2015 year. We were deliberate and thoughtful and generated two goals that will keep us on track with our mission.

### **Goal #1: State Board to Branch Board Retreats**

Meet in two-person teams with all branch board leadership and recently disbanded branches to establish a better connection between the state board and branches. Our agenda is to hear from branches; what you do (mission-related), what you want to do (mission related), what your needs are, and how and what the state board might do to assist you.

### **Goal #2: Website Support**

Recruit a student to be a volunteer Webmaster for the AAUW State Board and to assist the branches in setting up or expanding their websites.

**SAVE THE DATE** – I look forward to meeting many of you as I travel Kansas to talk to branches and their membership. I also hope to meet you at the annual state convention in **El Dorado on Saturday, April 11**, where we will be planting “Seeds for Growth” at the Hubbard Welcome Center.

I hope you will communicate with me and other state board members through [aauwstateboard@gmail.com](mailto:aauwstateboard@gmail.com) and please check out the AAUW Kansas State Board website for additions and changes this year at <http://aauw-ks.aauw.net>.

Wishing us all a good year and one that moves us beyond our expectations!

*Nancy Bolsen,*

A Proud AAUW Member

President, KS AAUW State Board 2014-2016

[nancybolsen@gmail.com](mailto:nancybolsen@gmail.com)

## **PRES. CHAT ...**

**In 2014-2015, AAUW of Kansas will celebrate 95 years** of being an AAUW state organization advocating for women and girls! What I find frustrating is that some of the issues for which we worked those many years ago are still unfinished, but relevant today.

What is your wish for AAUW of Kansas as we celebrate our 95th birthday? Send your wishes to me, Nancy Bolsen, ([nancybolsen@gmail.com](mailto:nancybolsen@gmail.com)). Your wishes will be displayed at the state conference, April 11, 2015, in El Dorado. Join us there as we celebrate our heritage and get fired up to continue our work in the coming years.

## AAUW LEADERSHIP CORPS NATIONAL REPORT FALL/WINTER 2014

The elections are over; there is a bit of good news from the general dismay. For the first time in history, there are **100 women in Congress**; 80 in the House and 20 in the Senate. It is a long way from parity, but it is a start. Remember, our motto is "50/50 by 2020."

Make your plans now to attend the **National Convention** in San Diego, June 18-21, 2015. Best rates on registration are available until December 31, 2014. The AAUW website has a brief first take on the amazing planned workshop topics. Take advantage of this great opportunity!



**Shirley Breeze**  
Leadership Corps Member

This is the time when we **elect new national officers**. In February and March 2015, materials will be available on the AAUW website and in Outlook containing the bios of the candidates. Check them out. A paper ballot can be requested on April 1, 2015, and on April 15 online voting opens. Help determine the direction of this exceptional organization by casting your ballot.

The National Board has adopted a revised **fundraising policy**. It is Policy 501. Become familiar with the new regulations, especially if your branch does extensive fundraising.

Several helpful leadership aids are on the website. **Quick Facts** sheets deal with current policy issues such as Common Core, STEM, Pay Gap, Health Care, Title IX, etc. These are helpful to enhance a branch program when the topic is being discussed. They are wonderful tools to help new members and prospective members become well-versed in our mission. **Leader Essentials** are guides to help member leaders in their officer/committee roles. They are available for LAF, Public Policy, Archiving, Programming, C/U Partners, Fellowships and Grants, International, Membership, STEM, and Marketing and Visibility.

Look for the **new research report** *Moving the Needle: Women in Engineering and Computing* to be published early next year.

The new term for the **Supreme Court** promises to deal with some important cases involving rights, especially as they affect women. Expect action on continued fallout from *Burwell v. Hobby Lobby*, restricting choice (targeted regulation of abortion providers), pregnancy discrimination (*Young v. UPS*), voting rights, and marriage equality.

There are two brand new items on **pay equity**. One is from the Bureau of Labor Statistics entitled Median Weekly Earnings, 2004-2014; it compares men and women's salaries. The other one is dated September 2014 from the Institute for Women's Policy Research; it is entitled *The Gender Wage Gap: 2013; Differences by Race and Ethnicity*. Both of these items would be valuable resources for a pay equity program or in preparation for Equal Pay Day April 14, 2015.

Remember, to continue to take advantage of the **Shape the Future** program. For every two new members you recruit to your branch, you receive one free national membership to be distributed at your discretion.

*Shirley Breeze, Leadership Corps Member*

[sbreeze@mindspring.com](mailto:sbreeze@mindspring.com)

### **2015 KS AAUW ANNUAL MEETING – SAVE THE DATE**

When: Saturday, April 11, 2015

Where: Butler County Community College Hubbard Welcome Center, El Dorado, KS

Theme: Seeds for Growth

Notable Speaker to date: Cordy Galligan, AAUW VP Marketing and Business Development



## **Board 2014-15**

### **President**

#### **Public Policy and Get Out the Vote**

Dr. Nancy Bolsen  
1731 Kings Road  
Manhattan, KS 66503  
785-565-8720  
[aauwstateboard@gmail.com](mailto:aauwstateboard@gmail.com)

### **Program Vice President**

Dr. Teresa Sullivan  
5900 Lockton Lane  
Fairway, KS 66205  
913-722-2861  
[sullivan.teresa@att.net](mailto:sullivan.teresa@att.net)

### **Membership Vice President**

Sara Nettleingham  
819 E. Minneapolis Ave  
Salina, KS 67401, 785-317-5848  
[sarah.nettleingham@yahoo.com](mailto:sarah.nettleingham@yahoo.com)

### **Treasurer**

Carolyn Dwire  
700 North Washington  
El Dorado, KS 67042  
316-321-0613  
[aporchlady@aol.com](mailto:aporchlady@aol.com)

### **Action Fund Chair**

Eileen Armstrong  
10143 Flint St.  
Overland Park KS 66212  
913-492-9395  
[dearmst44@gmail.com](mailto:dearmst44@gmail.com)

### **Secretary and Branch Services**

Carol Kirchmer  
2306 Paddington Court  
Newton, KS 67114  
316-283-2176  
[cdkirchmer@sbcglobal.net](mailto:cdkirchmer@sbcglobal.net)

### **Past President**

Dr. Bonnie Tandoc  
614 NE 36 St.  
Newton, KS 67114  
316-283-2009  
[bonster79@hotmail.com](mailto:bonster79@hotmail.com)

### **By-Laws Chair**

Jeannette Earles  
16939 W 183 St.  
Olathe, KS 66062  
(H) 913-592-2619  
(C) 913-269-0562  
[dnjearles35@embarqmail.com](mailto:dnjearles35@embarqmail.com)

### **Bulletin Editor**

Lynnette Redington  
920 Lazy Creek Drive  
Newton, KS 67114  
316-282-2458  
[lbjbo@cox.net](mailto:lbjbo@cox.net)

### **Leadership Corps**

Shirley Breeze  
[sbreeze@mindspring.com](mailto:sbreeze@mindspring.com)

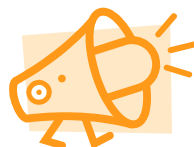
---

# **National AAUW FELLOWSHIPS AND GRANTS**

Contributed by Dr. Barbara Gatewood,  
President Manhattan Branch

Share this valuable information about AAUW's significant and outstanding Fellowships and Grants with others. Guidelines and applications are available online at [www.aauw.org](http://www.aauw.org). Direct application questions to [aauw@scholarshipamerica.org](mailto:aauw@scholarshipamerica.org) or call 319-688-4334.

- **AAUW Career Development Grants** (\$2,000-\$12,000, deadline December 15, 2014) to support women pursuing a certificate or degree to advance their careers, change careers, or re-enter the workforce and whose bachelor's degree was received at least five years before award period.
- **AAUW Selected Professions Fellowships** (\$5,000-\$18,000, deadline: January 10, 2015) to support women pursuing full-time study in a master's or professional degree program in which women are underrepresented, including STEM, law, business and medicine.
- **AAUW Community Action Grants** (One-year, \$2,000-\$7,000 and two-year, grant, \$5,000-\$10,000, deadline January 15, 2015) to support individuals, AAUW branches/states, and nonprofit organizations to fund innovative programs or non-degree research projects that promote education and equity for women and girls.



Do you have a branch activity or Success Story you'd like to share with other members? Send to [lbjbo@cox.net](mailto:lbjbo@cox.net) before the next Bulletin articles are due – February 20.

## **AAUW Public Policy – Take Action**



Since AAUW's founding, our members and supporters have spoken out about policies important to women and girls. Without

their voices, invaluable legislation would have never been passed. In recent years, such legislation included the Family and Medical Leave Act, the Matthew Shepard and James Byrd Jr. Hate Crimes Prevention Act, and the Lilly Ledbetter Fair Pay Act.

AAUW's policy work connects and rallies advocates at the local, state, national, and global levels to advance our work to empower women and girls. With the member-endorsed [Public Policy Program](#) as our guide, AAUW uses lobbying and grassroots efforts to push forward policies that break through educational and economic barriers for women.

The AAUW Public Policy and Government Relations Department, with input from the member leaders of the AAUW Public Policy Committee, leads AAUW's lobbying and grassroots efforts. However, AAUW member advocates across the country who give their time, energy, and voice to AAUW issues deserve the credit for truly advancing women.

We have many [resources](#) available, and the AAUW policy staff can be reached at 202-785-7793 or [advocacy@aauw.org](mailto:advocacy@aauw.org).

*Nancy Bolsen, President, KS AAUW*

### **State Supported**



The AAUW Kansas State Board voted recently to support the Melissa Harris-Perry lecture at the University of Kansas with a \$250 gift because her topic fit the AAUW mission.



**Front: Dr. Terri Sullivan, Carolyn Dwire.  
Back: Dr. Pam Dietz, Dr. Nancy Bolsen,  
Dr. Barbara Gatewood**

### **State Board Members Attend Conference**

For many branches, summer is time off for AAUW members, but not for your state leaders. We stayed busy!

In June, state board members Teresa Sullivan, Carolyn Dwire and Nancy Bolsen attended the 2014 AAUW Mid-West Regional Conference "AAUW Advocacy and YOU" in Lake of the Ozarks, MO.

As reported by Barbara Gatewood, President of the Manhattan Branch, "The growing excitement with AAUW, Branch revitalization, campus growth, staff and member competencies, and valuable resources were readily apparent at the biennial meeting attended by officers and members from the Midwest branches in AR, IL, LA, KS, MO, NE, LA and TX. "Everyone one returned to their branches with new contacts, ideas, and materials. The conference theme "AAUW Advocacy and YOU, " focused on AAUW public policy issues, making our voices heard, fundraising strategies, branch branding, how to share leadership skills, and STEM program ideas.

- Lisa Maatz, VP of Governmental Relations National AAUW gave a dynamic keynote address on [AAUW Policy for 2014-2015](#), reinforcing the competencies of the staff at National. "AAUW has the best 'policy shop' in the country and is extremely effective in having an impact on policy issues," Maatz stated. She stressed the importance of becoming an active citizen through the AAUW Action Network and the Two-Minute Activist website section.
- Jayna Gray, MO Association for Community Action gave heartbreaking poverty statistics nation-wide (14% Kansas population is below the poverty line) and how education is the key to breaking the poverty cycle that impacts every aspect of family life.



## Join the Wave – AAUW National Convention in San Diego

If pandas, award-winning beaches, and vibrant culture aren't enough to get you to join the wave with us at the 2015 AAUW National Convention in San Diego next June, here are six more can't-miss reasons to come.

1. **The Royal Treatment at Hotel del Coronado through AAUW's exclusive brunch and historical tour.**
2. **Walk in the tide pools on the beach and see exotic sea life in their natural habitat.**
3. **Grab a bite and do some artisan shopping in Old Town.**
4. **Meet the trailblazers of the women's movement in California at The Women's Museum of California.**
5. **Taste la dolce vita-without jet lag by visiting Little Italy-a must see stop on your San Diego eating tour.**
6. **Whales, wine and more. Head out in a 60-ft catamaran for whale watching, visit a woman owned winery or take a mission tour...there is lots more to do and see.**

We hope to see you at the 2015 AAUW National Convention in San Diego. Join us **June 18–21, 2015, at the Sheraton San Diego Hotel and Marina** as we continue our work empowering women and girls. And while you're there, enjoy the weather, the ocean views, and the laid-back pace of sunny California. Sign up at [www.aauw.org](http://www.aauw.org)

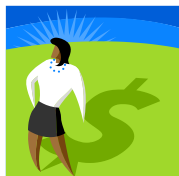
### **BRANCH NEWS From Shawnee Mission:**

The Shawnee Mission Branch is proud to announce the new student affiliate branch at Johnson County Community College. And...

The branch has established an endowed scholarship for a returning student at Johnson County Community College in honor of past member, Phyllis Hansen.

### **AAUW FUNDS and YOU!**

**With a Generous gift from the Ruth Keroher Estate, Ruth's AAUW Fund is complete. Ruth lived to 105 and remained a supporter of AAUW every day!**



You can find a list of Funds at [www.aauw.org](http://www.aauw.org). **Your individual or branch gifts to AAUW funds should be sent to Eileen Armstrong, Action Fund Chair.** She will forward to National so that we can keep track of Kansas contributions. *Please send before December 15 to be counted as a contribution in 2014.* Eileen's address is 10143 Flint St., Overland Park, KS 66214.

## **AAUW CALENDAR**

### **2014**

- November 30 Non-renewed Members Removed from Database
- December 5 Bylaws Comment Period Closes
- December 15 Deadline for 2014 Contributions to AAUW Funds to Eileen Armstrong. (see this page) Career Development Grant Due (see p. 3)
- December 31 Deadline for National Convention Best Value Registration


### **2015**

- January AAUW Annual Art Contest Begins
- January 1- March 15 Half Off National Dues
- January 10 Selected Professions Fellowships Due
- January 11 Human Trafficking Awareness Day
- January 15 Community Action Grant Due (see p.3) Announcement of Winner of Convention Package
- February Art Contest Voting
- February 20 KS AAUW Bulletin items due to [lbjbo@cox.net](mailto:lbjbo@cox.net) in .doc or .docx format.
- March Women's History Month
- March 8 International Women's Day
- March 16 Branch Member Recruitment for 2015-2016 Begins
- April Sexual Assault Awareness Month
- April 1 First Day to Request a Paper AAUW Ballot
- April 11 KS AAUW Annual Meeting, El Dorado
- April 14 Equal Pay Day
- April 24 KS AAUW Bulletin items due to [lbjbo@cox.net](mailto:lbjbo@cox.net) in .doc or .docx format.
- May 28-30 NCCWSL
- June 18-21 National Convention, San Diego
- June 30 Shape the Future 2014-15 Free Memberships Expire

### **SHAPE THE FUTURE – New UPDATE**

The Shape the Future membership campaign is designed to help branches recruit and retain members.

- NEW members and students join at 50 percent off the national dues rate when they join at a public event.
- For every two new members who join, the branch earns one free national membership, up to a maximum of five free memberships per year.
- *The five free memberships can be given to existing members **or former members.***

 Kansas AAUW Bulletin  
920 Lazy Creek Drive  
Newton, KS 67114-8909

BULK RATE  
U.S. POSTAGE  
**PAID**  
Permit No. 9  
Ottawa, KS  
66067

**AAUW - Advancing equity for women and girls through advocacy, education, philanthropy and research.**

#### AAUW Action Fund Mission

The AAUW Action Fund advances equity for women and girls through member activism and voter mobilization.

Since 1881, AAUW has been the nation's leading voice promoting education and equity for women and girls.

The AAUW Action Fund was established July 1, 2009, following a strategic restructuring of AAUW, the AAUW Educational Foundation, and the AAUW Leadership and Training Institute. The AAUW Action Fund supports AAUW's continuing goal of breaking through barriers for women and girls, and it does so through member activism and voter mobilization. Both organizations have a nationwide network of nearly 100,000 members, 1,000 branches, and 500 college/university institution partners.

A [briefing](#) on the AAUW website provides detailed information about the structure of AAUW, the AAUW Action Fund, AAUW branches, and members.

**AAUW Action Fund**  
1111 Sixteenth St. NW  
Washington, DC 20036  
800/326-AAUW (2289)  
[connect@aauw.org](mailto:connect@aauw.org)

In principle and in practice, AAUW values and seeks a diverse membership. There shall be no barriers to full participation in this organization on the basis of gender, race, creed, age, sexual orientation, national origin, disability, or class.



## November 2014 Bulletin

#### CONTACTS:

#### AAUW National Office:

1111 Sixteenth St. N.W. , Washington, DC 20036

[www.aauw.org](http://www.aauw.org)

[connect@aauw.org](mailto:connect@aauw.org)

800/326-AAUW (2289) 10:00 a.m. to 5:00 p.m.

202/785-7700 8:30 a.m. to 5:00 p.m.

Fax: 202/872-1425

#### State of Kansas AAUW Website

<http://aauw-ks.aauw.net/>

[aauwstateboard@gmail.com](mailto:aauwstateboard@gmail.com)

**If you do not have email,  
you will continue to receive your Bulletin via  
the US Postal Service.**

*Members: Please advise of email or address changes.*