



Bulletin

Volume 90, Number 2 Newton, Kansas March 2013



Dr. Bonnie Tandoc
KS AAUW President

From the President's Desk

Dear AAUW
Members,

I hope by the time you receive this note that we're not STILL digging out from under the epic snowstorm of February! Our

big, snow-loving dog brought half the white stuff back inside in his joy to share it with us.....we're snow inside AND out!

Your state board and the Salina Branch are busily preparing for the state annual meeting April 13. We are excited to be having Dr. Verna Fitzsimmons, CEO and Dean of K-State Salina as our keynote speaker. Dr. Fitzsimmons will exemplify AAUW's continued commitment to women in the fields of science and technology. Kathy Anthon, currently serving as an AAUW Director, will also join us that morning. She will give us a glimpse of what's happening on the national level with her presentation "Looking Forward with AAUW". If that's not enough...we'll be hearing a review of the historical novel *Caleb's Crossing* by Geraldine Brooks. There's still time to read it so you can participate in a discussion of the story of the first native American graduate of Harvard College. See page 3 & 4 for details.

Have you checked online to explore the debut of the new AAUW website logo and design? AAUW - Empowering Women Since 1881. This is the first logo change in 20 years. These changes, which include an updated tagline and a fresh color palette, are designed to place AAUW on the cutting edge of digital communication and appeal to a broad audience. The website is much easier to navigate and provides a wealth of information.

(www.aauw.org) Interestingly, in view of our annual meeting topics, there is a first annual Battle of the Plan... Engineer a Lesson contest...featured on the website. This is to help girls discover the value of engineering and its importance to all career fields and interests. Engineering has an astonishing gender gap - only 13% of professional engineers are women. We can change that!

Next fall, it is the plan of the state board members to bring the Princeton Review to one of our branch locations. Find out more about this enticing opportunity for your community when you attend the meeting in April. I am expecting to see you there !!

***Bonnie Tandoc, KS AAUW
President***

316-283-2009

bonster79@hotmail.com

AAUW LEADERSHIP CORPS

Here are number of tidbits I shared at the recent KS AAUW state conference call.

- The 2012 elections brought the most women to the federal Senate (20) and the federal House (81) than ever before.
- Kansas ranks 26th in the number of women in the state legislature (39 out of 165 positions.) Source: 2013 Center for American Women and Politics, Eagleton Institute of Politics, Rutgers.
- Once again AAUW gave a tremendous amount of money (\$4.3 million) to assist women in education and community projects.
- EVERY MEMBER SURVEY is due back April 2. The national office really wants to hear from each member. If you can't find your survey, go to www.aauw.org and complete it there.



Shirley Breeze
Leadership Corps Member

Shirley Breeze, Leadership Corps Member

2013 AAUW CALENDAR

Celebration of 125 Years of Awarding Fellowships/Grants

March 31 Registrations for KS AAUW Annual Meeting Due to Carolyn Dwire, State Treasurer (See page 3)

April 1 KS Star Branch Application Due
(See page 6)

Date to Request AAUW Paper Ballot

April 2 Every Member Survey Due

April 9 Equal Pay Day

April 13 KS AAUW Annual Meeting

April 15 AAUW Election Voting Begins

May 2 Paper Ballot Deadline Request

May 17 Deadline for Submission of Paper Ballot

May 30-June 1 NCCWSL, University of MD

June 10 AAUW Election Voting Closes

June 9-12 AAUW Convention, New Orleans

June 30 New Deadline for Special Dues Grads
Deadline for Claiming Free Membership
from STF Campaign

July 1 2013-14 AAUW Year Begins
Branch Dues Due



New Kansas AAUW
Board Members will
be Elected at
Annual Meeting

**Treasurer and President Elect
nominees to be announced.**

**If you are interested in a position,
contact Bonnie at
bonster79@hotmail.com today!**



Looking Forward with AAUW AAUW Annual Meeting

Saturday, April 13, 2013

Donna Vanier Children's Center, 155 N. Oakdale Salina

Name _____

Branch _____

Address _____

Street/P.O. City State Zip

Please indicate your status as an AAUW member for the credential information by checking all the following designations appropriate to you.

- | | | |
|---|---|--|
| <input type="checkbox"/> Branch Delegate | <input type="checkbox"/> Association Board Member | <input type="checkbox"/> 50 Year Member |
| <input type="checkbox"/> Alternate Delegate | <input type="checkbox"/> Branch President | <input type="checkbox"/> Student Affiliate |
| <input type="checkbox"/> Branch Member | <input type="checkbox"/> Kansas State Board | <input type="checkbox"/> University/College Member |
| <input type="checkbox"/> Member-At-Large | <input type="checkbox"/> Former State President | |

PLEASE NOTE ANY DIETARY RESTRICTIONS:

Registration due by **March 31, 2013**

COST: \$25.00 per attendee
(Includes morning snack & lunch)
Make checks payable to **AAUW Kansas**

Mail registration form and check to:
Carolyn Dwire
700 N. Washington
El Dorado, KS 67042

.....

Looking Forward with AAUW

Kansas Annual Meeting
Saturday, April 13

Donna Vanier Children's Center
155 N. Oakdale, Salina

At the KS AAUW Annual Meeting embrace your energy for AAUW by joining other members in recognizing where we've been and where we can go. Together we can help create a better future for all women and girls.

Doors Open at 8:30AM
Registration and Refreshments
9:00AM Activities Begins
3:00PM Adjourn

PRESENTERS:

Dr. Verna Fitzsimmons, CEO and Dean of K-State Salina
"What They Don't Teach Women in Business School"

Kathy Anthon, AAUW Director,
"Looking Forward with AAUW"

SPECIAL EVENT: Book Review of Geraldine Brooks' ***Caleb's Crossing***

To get directions to the meeting, go to www.mapquest.com. Chose "Get Directions", then enter your address and 155 N. Oakdale for your final destination.

Information Behind the Presenters of the 2013 KS Annual Meeting

Dr. Verna Fitzsimmons, CEO and Dean of Kansas State University Salina

Fitzsimmons began her duties as head of the campus in July 2012. Since then, she has updated K-State Salina's mission statement and initiated

strategic planning campus wide. She also has developed a master plan for the campus buildings and

facilities to integrate with the strategic plan. Fitzsimmons is working to expand industry opportunities for aviation students, including through a new agreement with ExpressJet. It provides qualified students with a conditional offer of employment as a first officer with the regional airline as early as the beginning of her junior year. Fitzsimmons earned a bachelor's, master's and doctoral degree in industrial engineering, all from the University of Cincinnati.



**Kathy Anthon, AAUW
Director**

Anthon has been a Director at Large for AAUW since 2009. Kathy has been Branch and Interbranch President and LAF VP for the State of Texas. She has been the liaison for multiple committees and is currently on the committee for the Conference of State Leaders. Besides AAUW Kathy has served on several boards of directors, committees, development, crew leader, campaign associate and volunteer at a resale shop whose profits provide temporary housing and a health care in Grapevine. Kathy has a BS and an MS in Education and is certified in Public Administration from the SUNY System.

Annual Meeting Hotel Choices

The American
1820 W Crawford
Phone- 785-826-1711
Contact - Susan
Price -\$72.00 plus tax, \$62.20 plus tax (triple A or double AARP)

Hampton Inn
401 W Schilling Rd
Phone - 785-823-9800
Contact - Rachel
Price - \$109.00 (queen), \$124.00 (king)

Days Inn South
632 Westport Blvd (off I-135)
Phone - 785-827-9315
Contact - Kimbre
Price - \$59.99 plus tax (1 queen), \$66.99 plus tax (2 queen)

Quality Inn and Suites by Choice Hotels
2110 W. Crawford
Phone - 785-827-9315
Contact - Elizabeth Neely
Price - \$72.99 plus tax (1 queen), \$76.99 plus tax (1 king)

None of the hotels furnish shuttles.



SUNFLOWER GARDEN

If your branch or you as an individual wishes to recognize someone with a sunflower (with a corresponding donation) in the KS AAUW Sunflower Garden at the Annual KS AAUW Meeting on April 13, **please inform Eileen Armstrong**, KS AAUW Funds Chair, 10143 Flint St., Overland Park KS 66212 or dearmst@everestkc.net



The Public Policy Report



If you have the comedic sense and strong sense of "politics as usual" to follow the Kansas legislature, you have been in for a real treat. It is stunning how those who supposedly support less government are so in our faces and personal lives as well as pocket books to create new and more laws that may not be very well penciled through as to the effect on us normal KANSANS!

I hope you are speaking out to your legislators not to support **Senate Bill 109** which bans cities, counties, school districts and other public agencies from lobbying legislators. And then the bill that prohibits courts from recommending suitable finance for public schools. Then there are the bills to get around the Kansas Open Meetings Act statutes **House Bill 2336 and Senate Bill 200!** Legislators are answerable to us in all ways shapes and forms---keep it that way. No behind the barn or in the tap room or for that matter in Cedar Crest meetings that decide the fate of Kansans by elite special groups. KEEP THE LIGHT ON THEM!! Just make sure you are keeping score on what is going on in this legislature. It is almost too much to keep up with. I know I have a farm and business to operate BUT keep your eye on your legislator as it is as I read recently "The temptation is strong to describe the current session as the most imperious, presumptuous, bone-headed assembly in Kansas history. Certainly in more than a century of legislating, Kansas has known a session that was even more destructive. We just don't know when it was." --John Marshall, Lindsborg News Record

***** Celebrate the victory of the **passage to continue the Violence Against Women Act.** Thank you Sen. Moran for voting for the women of Kansas and Rep Lynn Jenkins. To the rest of the Kansas delegation, shame on you.

***** **The Family and Medical Leave Act of 1993 (FMLA)** is a shining example of what AAUW lobbying efforts can help accomplish. Passed after seven years of hard work by AAUW staff and the AAUW Action Fund Capitol Hill Lobby Corps, the legislation continues to be held up 20 years later as a lobbying success story. You can celebrate all month! FMLA was signed FEB 5, 1993 by Bill Clinton.

***** **CQ State Track:** We are signed up and going. Keeps track of state legislation as related to AAUW issues. I receive updates on Fridays. I will forward to the emails I have. Please be sure I have your email. Mine is vlehmke@st-tel.net

***** **Sex Trafficking:** Human trafficking as we learned at our state convention last year. Here is the latest in Kansas: An initiative against commercial sexual exploitation and human trafficking aims to increase penalties for offenders and provide protection for victims under 18. Senate Bill 61 modifies and strengthens current law. Proponents say it will give Kansas law officers the tools needed to deter human trafficking and the sexual exploitation of children. Human trafficking is a \$32 billion crime industry worldwide, and occurs in Kansas at a rate the state is now unprepared to address, Attorney General Derek Schmidt said in written testimony to the Senate Judiciary Committee.

SB 61 modifies existing laws, creating the new crime of commercial sexual exploitation of a child. It would allow authorities to hold and treat victims of human trafficking as victims.

***** Are you ready for APRIL 9? **Celebrate Equal Pay Day.** AAUW provides tips at:

<http://www.aauw.org/2012/12/06/are-you-ready-for-equal-pay-day/>

Contact me: vlehmke@st-tel.net or 620-397-2350 or just address something to Louise Ehmke, Healy, KS 67850.

Louise Carlson Ehmke, Public Policy Chair



- Celebrate 50th anniversary of the Equal Pay Act with Lilly Ledbetter
- Shop the French Quarter Market Place for some Creole AAUW Keepsakes
- Learn how to strengthen AAUW at the How to Recruit New Members workshop
- Meet “Eleanor Roosevelt” at the banquet reception
- Get your creative programming gears moving with model programs

Kansas Star Branch

Be a Star for 2012-13



Document your Branch events, projects, donations, and community visibility your Branch gained during the 2012-13 year and become a Kansas Star Branch! It is not necessary to achieve all Stars, simply tell us what accomplishments were made this year.

Deadline for submission is April 1, 2013

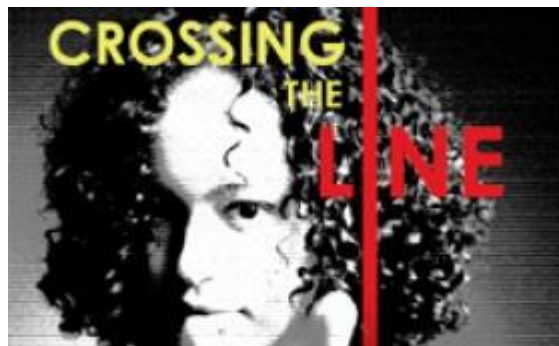
Recognition will be given at the Kansas Annual Meeting. Applications are available by contacting at Terri Sullivan at 913-722-2861 or sullivan.teresa@att.net.



PERFECT TIMING FOR THE PERFECT GIFT

Give-a-Grad a Gift: *The uniqueness of this program is that AAUW members can give a recent grad – a friend, daughter, son, granddaughter, grandson, niece, or nephew – a free AAUW membership within two years of graduation. There is no cost to you or them! Your grad will receive a one-year, member-at-large membership (a \$49 value). Go to aauw.org for all the details.*

Ramona Newsome,
Vice President of Membership



Linda Hallman Speaks Out

Tackling the Role that Bullying and Harassment Play in School Violence

Linda Hallman, National AAUW Executive Director, shared her views about bullying and harassment and school violence with *Huffington Post* in February. Hallman noted the AAUW's report [Crossing the Line: Sexual Harassment at School](#). She noted that nearly half of all 7-12th grade students said that they have encountered some form of sexual harassment and that this harassment caused them to feel sick to their stomach, have trouble sleeping, and skip school.

To see the full article go to: http://www.huffingtonpost.com/linda-hallman/tackling-the-role-that-bu_b_2593740.html



A Moment To Smile:

“When I go out to dinner with my boyfriend, they always hand him the check and he says, ‘wrong economy’ and hands it to me.”

- Amanda Steinberg, CEO and Founder of DailyWorth

AAUW Kansas AAUW Bulletin
920 Lazy Creek Drive
Newton, KS 67114-8909

BULK RATE
U.S. POSTAGE
PAID
Permit No. 9
Ottawa, KS
66067

AAUW - Advancing equity for women and girls through advocacy, education, philanthropy and research.

AAUW Action Fund Mission

The AAUW Action Fund advances equity for women and girls through member activism and voter mobilization.

Since 1881, AAUW has been the nation's leading voice promoting education and equity for women and girls.

The AAUW Action Fund was established July 1, 2009, following a strategic restructuring of AAUW, the AAUW Educational Foundation, and the AAUW Leadership and Training Institute. The AAUW Action Fund supports AAUW's continuing goal of breaking through barriers for women and girls, and it does so through member activism and voter mobilization. Both organizations have a nationwide network of nearly 100,000 members, 1,000 branches, and 500 college/university institution partners.

A [briefing](#) on the AAUW website provides detailed information about the structure of AAUW, the AAUW Action Fund, AAUW branches, and members.

AAUW Action Fund
1111 Sixteenth St. NW
Washington, DC 20036
800/326-AAUW (2289)
connect@aauw.org

In principle and in practice, AAUW values and seeks a diverse membership. There shall be no barriers to full participation in this organization on the basis of gender, race, creed, age, sexual orientation, national origin, disability, or class.

KANSAS AAUW March 2013 Bulletin



Tax Time Reminder – You may deduct \$46.00 of your National AAUW dues on your taxes.

NEW EMAIL to reach KS AAUW

aauwks@gmail.com

**If you do not have email,
you will continue to receive your Bulletin
via the
US Postal Service.**