



Bulletin

Volume 93, Number 2 Newton, Kansas February 2016

From Your President



Dr. Nancy Bolsen
KS AAUW President

As I write to you, I have been helping the Manhattan Branch go through their AAUW archives at the Riley County Historical Museum. It is quite a task (a team of four is just right), but we are leaving a stellar legacy by following the model information from the

AAUW archivist at National and assistance from the museum. I encourage you to look forward by looking back into your Branch history and make it easily accessible for research and branch newsletter articles.

One gem I found was in the Kansas Division Bulletin, September 6, 1956. In it was a report from the State Chairman of ARTS: "Have you seen the report of the recent AAUW survey? With over 50% of our (AAUW) members being homemakers, I feel we need to do more in our Creative Arts program to make our everyday living more creative. Study is stimulating, but we need to put it into operation—interior decorating; selecting pictures and records for the home; eye appealing food preparation; food preparation, encouraging our children to express themselves in a creative manner." Mrs. Harvey O. Robinson, AAUW State Arts Chair.

My thoughts then focused on our current Outlook-Claiming Creative Space: Women in the Arts, which shares a tour of some of many art forms that women use and reminds us that many women's works have been overshadowed and how they are breaking through past barriers. As you can see topics like Arts cycle back over the years.

The AAUW State Board and our host Newton Branch are excited to welcome you to the **Kansas AAUW**

Annual Meeting Saturday, April 9, 2016, in Hesston. (See pages 3 -5 for details). It will be an exciting, stimulating and networking meeting in an absolutely beautiful setting at the Dyck Arboretum, an environment that promises to promote great thoughtful and energetic conversations.

At this year's Annual State Meeting, we have two main speakers including Dr. Mirta Martin, President of Fort Hayes State University, and Traci Jensen, an AAUW National Director, who will update us on all things AAUW and answer member questions. I hope to meet you in Hesston!

In the next couple of months each Branch will be receiving critical information from the AAUW State Board. First, will be the **AAUW State Board National Conference for College Women Student Leaders (NCCWSL) Application**. Through an application process the State Board will provide funds up to \$1,700 for one college woman to attend the NCCWSL event at the University of Maryland, College Park, June 2-4, 2016. We need your help to find eligible candidates! Second, will be a **Get Out the Vote (GOTV)** packet. It is filled with wonderful materials and ideas to increase all aspects of engaging voters' activities. Last, but not least, each Branch will receive a **Title IX packet** that we are asking each Branch to share with one public school in their Branch area. Title IX prohibits sex discrimination in US schools and ensures all students have access to education.

Remember—"AAUW, we have worked tirelessly so that women and girls could gain more choices and opportunities, and we have made significant advances. But we're not done yet!"

A special thank you and congratulations to the branches that have recruited new members!

Nancy Bolsen,
A Proud AAUW Member
President, KS AAUW State Board 2014-2016
nancybolsen@gmail.com

AAUW LEADERSHIP CORPS

NATIONAL REPORT WINTER/SPRING 2016

Midwest Regional June 3-4, 2016

Make plans now to participate in this exciting opportunity. Registration fee is \$45.00 which covers all materials, film and reception Friday night, all breaks, continental breakfast Saturday morning and all other activities and events. Registration is separate for the Gala Luncheon; it is \$26.00. **Register by May 28.** For additional information, call 314.831.5359 or 636.938.3958. (See Page 8 for form.)



Shirley Breeze
Leadership Corps Member

The Great Wolf Lodge has activities for all ages; the surrounding area has shopping discount malls, restaurants, and a variety of sports venues. Call 1-866-944-9653 for room reservations; suite rooms (which accommodate six people) are \$176.86 plus taxes and fees.

National Candidates

Deadlines for nominations for officers for the next biennium will be announced shortly. Start thinking of some capable people who would serve AAUW well at the National level. What about you?

Research Reports

Be sure to display AAUW's latest research report *Solving The Equation* at your tabling events. In March, AAUW will launch a new report, *Barriers and Bias: The Status of Women in Leadership*.

GOTV

AAUW is putting great effort into its GOTV support this major election year. Many materials are on the AAUW.ORG website. Watch for additional materials and webinars.

Membership Discounts

National dues are half price from January 1 to March 15. Now is a good time to recruit new members. Extra savings apply if using the Shape the Future campaign.

Branch/State Newsletters

Check our Lisa Maatz's article from the Huffington Post of December 31, 2015, entitled "The Good, the Bad, and the Oh-So-Ugly for Women in 2015." Some of the material would make good items for your next newsletter.

Also, check out "7 Feminist Resolutions for the New Year" for some additional interesting material and the AAUW Action Network January 7, 2016, publication for AAUW's policy achievements. Another interesting article is "The 10 Best Feminist Quotes of 2015" which was published on December 18, 2015.

State Support for Public Higher Education

A new study indicates that most states in our area are not doing too well in support of public higher education: MO and IL received an F; KS received a D; AR received a C; OK and TX were the best with a B each.

Membership Recruitment Share and Learn

AAUW is presenting some new webinars on membership recruitment. The first is scheduled for February 24; registration is now open for these webinars. Check out the AAUW website.



Shirley Breeze, Leadership Corps Member
sbreeze@mindspring.com

AAUW National is reminding Branches and State Boards to use the current AAUW logo on all communication, including Twitter, etc. For current AAUW National logos go to

<http://www.aauw.org/resource/aauw-branding-tool-kit/>

From Rebecca Norlander, AAUW National Director

AAUW – Making A Difference For Kansas Women



Annual Meeting Saturday, April 9, 2016 – Hesston, KS 8:30AM – 3:00PM

Your opportunity for learning, inspiration, and collegiality.

Location: Dyck Arboretum, 177 W. Hickory St, Hesston - Exit Interstate 135 at exit 40 (Lincoln Blvd.)
35 miles north of Wichita or 60 miles south of Interstate 70/Salina. See more at [Dyck Arboretum-Visitor Information](#)

Featured Speakers: Dr. Marta Martin, President, Ft. Hays State University
Traci Jensen, member of AAUW National Board of Directors

Election of state officers: President, Membership VP, Treasurer, and AAUW Funds Chair.
Silent Auction & Donation Tables (Bring your checkbooks to support AAUW!)

Doors Open at 8:30AM with Registration and Refreshments. Adjournment at 3:00PM.

2016 KS AAUW ANNUAL MEETING - April 9 - REGISTRATION FORM

Name _____

Branch _____ Student Organization (if applicable) _____

Address _____
Street/P.O. City State Zip

Please indicate your status as an AAUW member for the credential information by checking all the following designations appropriate to you.

- | | | |
|---|---|--|
| <input type="checkbox"/> Branch Delegate | <input type="checkbox"/> Association Board Member | <input type="checkbox"/> 50 Year Member |
| <input type="checkbox"/> Alternate Delegate | <input type="checkbox"/> Branch President | <input type="checkbox"/> Student Affiliate |
| <input type="checkbox"/> Branch Member | <input type="checkbox"/> Kansas State Board | <input type="checkbox"/> University/College Member |
| <input type="checkbox"/> Member-At-Large | <input type="checkbox"/> Former State President | |

Registration due by FRIDAY, March 25, 2016

COST: \$35 per Member/ \$10 Student (Includes snacks & lunch & materials) Make checks payable to AAUW Kansas	Mail registration form and check to: Carolyn Dwire, KS AAUW Treasurer 700 N. Washington, El Dorado, KS 67042
---	--

ANNUAL MEETING DETAILS

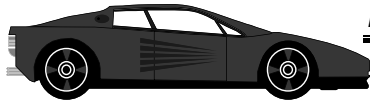
Special Items for and by YOU!

There will be **tables available for branches to display your donation items** to raise Branch funds. Bring those items you use to build funds locally.

A **silent auction** to help raise funds for the State AAUW will be in full swing too!

Share a Ride – Get Reimbursed

*****KS AAUW will reimburse mileage to and from the annual meeting for one car per branch at the KS AAUW mileage rate.*****



Traci Jensen, member of AAUW National Board of Directors

Traci is president of the AAUW West Harris County (TX) Branch, where she helped facilitate Houston's Expanding Your Horizons conference. Traci earned her bachelor's degree from Oklahoma State University and her master's and doctoral degrees in curriculum and instruction from the University of Houston. She has been a classroom teacher, a professor of education, and a political candidate for the Texas State Board of Education. Traci regularly lobbies the Texas legislature on issues pertaining to public education. She spends the rest of her time working with her 16-year-old son on the Alpha Charity League and being a court-appointed child advocate as well as a member of CASA's Speakers Bureau. Traci is also an active board member of the Spring Branch Family Development Center.



Featured Speakers:



Dr. Mirta Martin –President of Fort Hays State University

The Kansas Board of Regents appointed Dr. Martin the ninth president of Fort Hays State University on May 2, 2014. Dr. Martin holds a baccalaureate degree in psychology and political science from Duke University; a master of business administration degree from the

University of Richmond; and a doctorate with an emphasis in strategic management and leadership from Virginia Commonwealth University. She is fluent in three foreign languages.

Under her leadership, the Reginald F. Lewis School of Business was named the Best Business Program (out of 108 historically black colleges and universities throughout the country) by the Center for HBCU Media Advocacy. The business school also received the prestigious Governor's Technology Award for Innovation in Higher Education, the RichTech Technology Innovation Deployment Award, and it made history in 2010 by becoming the first school in the nation to launch an integrated curriculum predominantly digitally, using open source digital textbooks.

Born in Havana, Cuba, and an immigrant to the United States, Dr. Martin uses her interpersonal and cultural expertise to work diligently to promote access to affordable educational opportunities.



SLATE of STATE OFFICERS

President Nominee: Terri Sullivan, Shawnee Mission Branch

Terri has been serving as President-Elect this year. She served as state president in the past. Terri attempts to get to each national and regional meeting.

Vice President – Membership Nominee: Sara (Nettleingham) Prince, Salina Branch

Sara is currently serving as the Vice President of Membership. This would be her second term in this office.

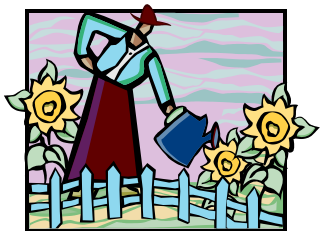
Secretary Nominee: Paula Shields, Wichita Branch

From Paula: I am a retired Special Education teacher. I spent most of my career in Derby. I received my undergraduate and master degrees in the field of psychology and special education from Emporia State University. My specialist degree in education was from the University of Kansas in the field of learning disability. I have been a member of AAUW since 1994. I have served as secretary, president, and now part of the committee that plans for the Wichita branch. I have been to one national meeting, regional meetings, and many state AAUW meetings.

AAUW Funds Chair Nominee: Still searching.

Please let Nancy Bolsen, President, know if you are interested. aauwstateboard@gmail.com

MORE ANNUAL MEETING DETAILS



SUNFLOWER GARDEN

If your branch or you as an individual wishes to recognize someone with a sunflower (with a corresponding \$25 donation) in the KS AAUW Sunflower Garden at the KS AAUW Annual Meeting on April 9, **please inform Eileen Armstrong**, KS AAUW Funds Chair, 10143 Flint St., Overland Park KS 66212 or dearmst44@gmail.com

Kansas Star Branch **Be a Star for 2015-16**



Document your Branch events, projects, donations, and community visibility your Branch gained during the 2015-16 year and become a Kansas Star Branch! Applications are online at aauwks.org website. It is not necessary to achieve all Stars, simply tell us what accomplishments were made this year. Recognition will be given at the KS Annual Meeting.

Send application to: Louise Ehmke, 74 W. Rd, 130, Healy, KS 67850 or email vlehmk@st-tel.net.

LODGING OPTIONS

If you want to stay and visit the sights of South Central Kansas and Harvey County here are some lodging options.

Holiday Inn Express
1430 E. Broadway Ct.
Newton, KS 67114
[316 804 7040](tel:3168047040)

Days Inn
105 Manchester Ave.
Newton, KS 67114
[316 283 3330](tel:3162833330)

Comfort Inn & Suites
1205 E. 1st St.
Newton, KS 67114
[316 804 4866](tel:3168044866)

Americinn Lodge & Suites
2 Leonard Ct.
Hesston, KS 67062
[620 327 2053](tel:6203272053)

Campus Cottage Guesthouse B & B
2420 Goerz
North Newton, KS 67117
[316 283 1105](tel:3162831105)

Do you know a college student with passion for AAUW's Mission?



The Kansas AAUW State Board is excited and pleased to send one Kansas college woman to the **American Association of University Women (AAUW) National Conference for College Women Student Leaders (NCCWSL)**. The scholarship application was sent to Branch Presidents and can be found at <http://aauw-ks.aauw.net/scholarships/>. The NCCWSL conference June 2-4, 2016 at the University of Maryland, College Park.

We encourage you to share this NCCWSL application with all eligible college women in your community and assist them with the application process and registration for the NCCWSL conference (<https://www.nccwsl.org/registration/>), if appropriate.

The Kansas AAUW State Board voted and is committed to assist the NCCWSL Scholarship winner with conference expenses up to \$1,700 to attend the nation's premier leadership conference for college women. Students who attend this conference share that it is a transformative experience. The NCCWSL Conference prepares college women to be the next generation of leaders and help them make their future what they want it to be.

The postmark deadline for this AAUW-NCCWSL scholarship is **March 15, 2016** and the estimated date for the announcement of the winner is **March 29, 2016**.

Please direct your questions to: Jean Butts at aauwpartnerships@gmail.com

Send completed applications to: Jean Butts, Bethel College, 300 East 27th Street, North Newton, KS 67117, or **send electronically to aauwstateboard@gmail.com**



AAUW Public Policy

REPORT CARDS FOR KANSAS

LEGISLATORS – Feb. 12, 2016 from
AAUW Washington Update

Legislative Session 2015

Kansas Senators and Representatives had very low scores on issues of importance to AAUW. Issues of importance to AAUW included **Economic Security**, **Education**, and **Civil Rights**.

There were 6 pieces of legislation that were emphasized by AAUW:

Paycheck Fairness – creates incentives for employers to address gender pay gap

Murphy Accountability Amendment (accountability for test scores, high school graduation rates, preparation for post-secondary education)

Survivor Outreach & Support (SOS)

Campus Act (mandating the provision of student access to a confidential adviser on campus, liaison to medical care, information on legal rights)

Bill to Prohibit Federal Funding of Planned Parenthood – speaks for itself

Justice for Victims of Human

Trafficking Act – demands end of illegal trade in human trafficking and a “belief” that policies are needed to address trafficking and support for survivors of same.

Democracy for All – remove big \$\$ from elections and provide transparency for contributions to political campaigns.

Our senators and representatives were among the legislators who had the lowest scores.

Roberts and Moran voted AGAINST the stated interests of AAUW except on the Human Trafficking

Representatives Huelskamp, Jenkins, Pompeo, and Yoder voted AGAINST the stated interests of AAUW except in the area of Human Trafficking and Huelskamp did vote for the student success (Murphy Accountability) amendment so he had a slightly higher score.

Marjean Harris, Public Policy Chair



AAUW CALENDAR 2016

NOW- March 15 Half Off National Dues
February Black History Month
February 24 Membership Share and Learn Webinar
February 26 Deadline Nomination for Title IX Champion

March Women's History Month
March 8 International Women's Day
March 25 KS ANNUAL MEETING REGISTRATION DUE
March 30 Release of New Research Report – *Barriers and Bias: The Status of Women in Leadership*

April Sexual Assault Awareness Month
April 8 State Board Meeting, 5:30 PM
April 9 KS AAUW Annual Meeting, Hesston (see p. 3)
April 12 Equal Pay Day
April 22 KS AAUW Bulletin items due to lbjbo@cox.net in .doc or .docx format and pictures in .jpg form.

May 15 Mandatory Bylaw Revision Deadline (see below)
May 28 **REGIONAL MEETING REGISTRATION DUE (see p. 7)**
June 2-4 NCCWSL (see p. 5)
June 3 & 4 MidWest Ten State Conference (see p.7)
June 30 2016-17 Officer Reports due to National AAUW in new headquarters

Bylaws and your Branch...Time to Revisit

Each AAUW state and branch is (a) required to make mandatory conformative bylaws and policies/procedures adaptations and (b) strongly urged to make sure that the items noted below are correctly addressed.

Branches must follow whatever procedures are established in their state for bylaws approval. In addition, **by May 15**, branches must forward an electronic copy of their updated bylaws to AAUW at connect@aauw.org. If you need assistance, please contact connect@aauw.org.

MANDATORY CHANGES

Article III. USE OF NAME - Section 2. Proper Use of Name and Logo -Note: The language in Article III, in its entirety, is a mandatory substitution in state and branch bylaws as replacement for current verbiage.

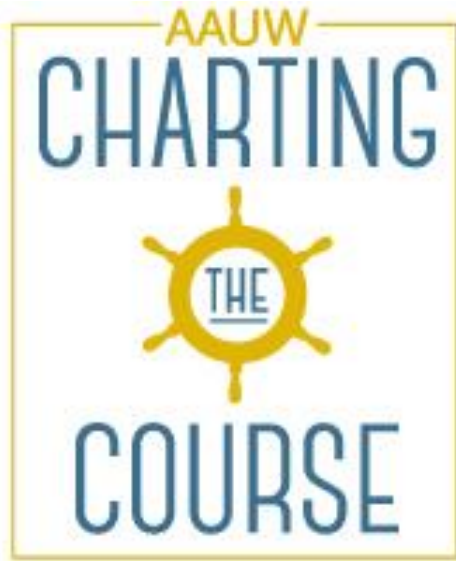
Article IV. MEMBERSHIP AND DUES - Section 3. Basis of membership

- Individual member – eligibility
- Categories of membership

Article XI. Section 2. Organization

Section 4. Property and Assets

AAUW Is Charting the Course. Why Now?



The story of women's progress toward equality in this country is a remarkable one, and AAUW has played an important role in nearly every chapter. We've worked hard to open more opportunities than ever to women and girls, and we have made significant advances. But we're not done yet.

There are still formidable challenges to tackle. In our economy, women are still paid, on average, just 79 cents for every dollar men are paid. In Congress, only one-fifth of our leaders are women. In business, women make up just 5 percent of Fortune 500 CEOs. In short, we have a lot of work to do.

Our two-year Charting the Course campaign aims to raise \$1 million in unrestricted funds to ensure that AAUW is well prepared to meet the issues facing us today and into the future. These unrestricted funds will be used wherever the need is greatest, empowering women in our communities, schools, workplaces, and positions of leadership.

What role do you play?

The next phase of women's achievement calls for a bold and ambitious plan — and we have one. We must bring AAUW's strong, effective national programs to more women and girls across the country. Your support will get us there. *From AAUW National website aauw.org*

Special Event:

Kansas AAUW State Board is supporting the visit and welcomes all AAUW member to the presentation of Noorjahan Akbar on March 8, at 4:00PM in Forum Hall at Kansas State University in Manhattan. For more information, visit: <http://manhattan-ks.aauw.net/>



ARTIST AMONG US...



Ramona Newsom, Salina Branch, is excited, and so are we! Her photo has made the 2016 AAUW Art Contest. Now she needs your help to get it to be one of the top 10 entries and one of six notecards. Voting is open until Monday, February 29. Go to <http://www.aauw.org/contests>, login to your AAUW account and vote for your TOP 10 entries. Ramona's entry is called "Beyond the Gate." Have fun viewing these great talents of AAUW members across the globe.

Are you ready for the 2016 Equal Pay Day?

Equal Pay Day is the symbolic day when women's earnings "catch up" to men's earning from the year before. In 2016 Equal Pay for U.S. women overall will be observed on Tuesday, April 12. American women who work full time, year round are paid only 79 cents for every dollar men are paid. For women of color, the wage gap is even larger, so it takes longer for their earnings to catch up: Equal Pay Day for African American women falls on August 26, Equal Pay Day for Native American women is on September 14 and Equal Pay Day for Latina women is on October 15. (The pay gap for white and Asian American women is smaller than the gap for women altogether.)



AAUW members all over the country organize rallies, bake sales, issue forums, (un)happy hours and other awareness events on these days of action. Search for the Pay Equity Resource Kit on www.aauw.org for ideas. *From 2016 Winter AAUW Outlook*

JOIN THE EXCITEMENT!



MIDWEST TEN STATE AAUW BIENNIAL CONFERENCE

June 3-4, 2016

(Noon Friday to Saturday Late Afternoon)

Great Wolf Lodge Kansas City, Kansas

Conference Registration	\$45
Registration includes Friday reception and film, Saturday light breakfast, breaks, conference materials, AV, and all special activities.	
Saturday American Buffet	\$26
Salad, pasta, entrée, dessert, bread and beverages. Please let us know if you have special dietary needs.	
Donation for Student Attendee	—
Student Registration	\$20
TOTAL	—
Name	_____
Address	_____
Phone	_____
Email	_____

Make checks to AAUW Midwest Regional Conference and mail to: Carol Davis-McDonald, 827 Bergquist Drive, Manchester MO, 63011 Deadline May 28, 2016

Call 1-866-944-9653 for room reservations. Use block code 1 606AAUW. Suite rooms are \$176.86 plus tax and fees and sleep 6 people. For more information call 314-831-5359 or 636-938-3958 or contact sbreeze@mindspring.com or apaticlashores@afl.net



Kansas AAUW *Bulletin*
920 Lazy Creek Drive
Newton, KS 67114-8909

BULK RATE
U.S. POSTAGE
PAID
Permit No. 9
Ottawa, KS
66067

AAUW - Advancing equity for women and girls through advocacy, education, philanthropy and research.

AAUW Action Fund Mission

The AAUW Action Fund advances equity for women and girls through member activism and voter mobilization.

Since 1881, AAUW has been the nation's leading voice promoting education and equity for women and girls.

The AAUW Action Fund was established July 1, 2009, following a strategic restructuring of AAUW, the AAUW Educational Foundation, and the AAUW Leadership and Training Institute. The AAUW Action Fund supports AAUW's continuing goal of breaking through barriers for women and girls, and it does so through member activism and voter mobilization. Both organizations have a nationwide network of nearly 100,000 members, 1,000 branches, and 500 college/university institution partners.

A [briefing](#) on the AAUW website provides detailed information about the structure of AAUW, the AAUW Action Fund, AAUW branches, and members.

AAUW Action Fund
1111 Sixteenth St. NW
Washington, DC 20036
800/326-AAUW (2289)
connect@aauw.org

In principle and in practice, AAUW values and seeks a diverse membership. There shall be no barriers to full participation in this organization on the basis of gender, race, creed, age, sexual orientation, national origin, disability, or class.



February 2016 Bulletin

CONTACTS:

AAUW National Office:

1111 Sixteenth St. N.W., Washington, DC 20036

www.aauw.org

connect@aauw.org

800/326-AAUW (2289) 10:00 a.m. to 5:00 p.m.

202/785-7700 8:30 a.m. to 5:00 p.m.

Fax: 202/872-1425

State of Kansas AAUW Website

<http://aauw-ks.aauw.net/>

aauwstateboard@gmail.com

**If you do not have email,
you will continue to receive your Bulletin via
the US Postal Service.**

Members: Please advise of email or address changes.