



Bulletin

Volume 91, Number 2

Newton, Kansas

February 2014

From the President's Desk



Dr. Bonnie Tandoc
KS AAUW President

Dear AAUW Kansas Members,

Good morning!

We're nearly experiencing a blizzard in Newton today...the snowflakes are getting larger and it's looking like a winter day, for sure. I put an umbrella on the patio table to protect the seed in a flat bowl our birds love to use for dining. I am hoping it will make their getting breakfast, lunch and dinner a bit easier today! Speaking of winter...

I'm certainly looking forward to spring! Our AAUW spring plans are shaping up nicely. I'd like to be amongst the first to invite you ALL to our annual meeting. We will be "*Branching out in the Little Apple*", Manhattan, KS, on April 12. Please do come and spend the day. The Manhattan Branch has a fabulous day planned for us and you will NOT want to miss out on an opportunity to unite as a community of women working FOR women, leading toward greater visibility and positive

societal change. Surely you'll join us to learn a lot, share valuable communication, collaborate and celebrate successes. I'm anticipating seeing familiar faces and meeting new ones. If each branch brought a carload of people - we'd have a great group. Think about ANOTHER carload of guests, a greater group - WOW! THAT would be *exciting!*

For later this year SAVE THE DATE June 13-14, for the AAUW Mid-West Regional Conference which will be held at the Lodge of the Four Seasons at Lake of the Ozarks, Missouri. Lisa Maatz, AAUW VP of Government Relations is the keynote speaker.

These two events are representative of the work of AAUW...empowering women and preparing young women to become the outstanding leaders of tomorrow as well as encouraging and recognizing great women leaders of today.

See you soon.

Bonnie Tandoc, KS AAUW President ,316-283-2009, bonster79@hotmail.com

Kansas Star Branch

Be a Star for 2013-14



Document your Branch events, projects, donations, and community visibility your Branch gained during the 2013-14 year and become a Kansas Star Branch! It is not necessary to achieve all Stars, simply tell us what accomplishments were made this year.

Deadline for submission is April 1, 2014

Recognition will be given at the Kansas Annual Meeting. Applications are available by contacting at Terri Sullivan at 913-722-2861 or sullivan.teresa@att.net.

SAVE THE DATE

AAUW MID-WEST REGIONAL CONFERENCE June 13-14, 2014



Lake of the Ozarks,
Missouri



Shirley Breeze
Leadership Corps Member

Lisa Maatz, AAUW Vice President of Government Relations
Keynote Speaker

Reasonable hotel and meal rates; Choice of 11 different breakout sessions;
Public policy panel; Open forum; Award winning women's movie; Various other events/activities.

Enjoy the beautiful Ozarks and Lake area at this outstanding AAUW conference.

More Information Available Shortly Questions? sbreeze@mindspring.com



MANDATORY BYLAW

UPDATES:

National AAUW requires all states and branches to update bylaws when National bylaws are updated. Specifically there are changes to the Membership and Dues section of all state and branch bylaws.

For complete details, presidents should visit
<http://www.aauw.org/resource/mandatory-conformance-memo/>

Updated bylaws should be send via email to National AAUW by MAY 15, 2014.

AAUW CALENDAR

2014

MARCH – Women's History Month

Update of The Simple Truth About the Gender Pay
Gap Available

March 1 Membership Survey Deadline

March 8 International Women's Day

APRIL 8 Equal Pay Day

April 1 Registration for KS AAUW Meeting due
(See page 3 & 4)

April 12 KS AAUW Annual Meeting, Manhattan

MAY 15 Deadline for Submitting Mandatory Bylaw
Changes (See above notice)

JUNE 5-7 NCCWSL

June 13-14 Mid-West Regional Conference, Missouri



Annie Houle conducts salary negotiation workshops, *START SMART*, co-hosted by AAUW Manhattan Branch and K-State's Career & Employment Services.
<http://manhattan-ks.aauw.net>.

June 30 Shape the Future 2013-14 Free
Memberships Expire

JULY Implementation of New Fundraising Policies

2015

JUNE 18-21 National Convention, San Diego

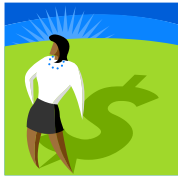
Kansas AAUW Email Correction

Action Fund Chair

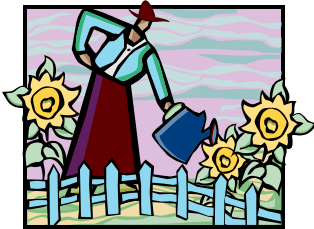
Eileen Armstrong

dearmst44@gmail.com

Gifts to AAUW Funds should be sent to Eileen Armstrong, Action Fund Chair.



(This includes the former Educational Funds, LAF Sunflower Garden honors and endowment funds.) She will forward to National so that we can keep track of Kansas contributions. We are working on completing the Ruth Keroher #4907 fund now that Gretchen Morgenstern's is complete. Eileen's address is 10143 Flint St., Overland Park, KS 66214.



SUNFLOWER GARDEN

If your branch or you as an individual wishes to recognize someone with a sunflower (with a corresponding \$25 donation) in the KS AAUW Sunflower Garden at the Annual KS AAUW Meeting on April 12, **please inform Eileen Armstrong**, KS AAUW Funds Chair, 10143 Flint St., Overland Park KS 66212 or dearmst44@gmail.com

Olathe Branch News:

Branch names 2013 AAUW Scholarship



Whitney Starr was awarded the Olathe AAUW Branch scholarship as she completes her teaching certification and pursues her dream "to help elementary school children reach their full potential." She volunteers for the Food for Kids Program sponsored by the *Emporia Gazette*, is a student representative for NCATE and KSDE steering committees,

secretary of Kappa Delta Pi (National Honors Society for Education Majors) and assisted with the organization of the Kansas Master Teachers Award Program the past four years.

Observing Women's Suffrage Day- Honors Life Member

Olathe Branch recognized Women's Suffrage Day with a celebration included viewing a film, "Quantrill's Raid on Olathe," which is one in a series that were funded by AAUW Life Member Maron Moore. She was honored at this celebration for her position as Public Policy chair dedicating herself to preserving honest, efficient government.



BRANCHING OUT IN THE LITTLE APPLE

**2014 KS AAUW ANNUAL MEETING APRIL 12
LODGING & MEAL OPTIONS**

Lodging Options in the Little Apple:

All the following are locally owned and operated and provide an alternative to our national corporate chain lodging options:

The Morning Star Bed and Breakfast, 617 Houston Street, www.morningstarbandb.com, 785-587-9703
Daughter's House Inn, 617 Colorado Street, www.daughtershouse.com, 785-565-0086
Moore House Bed and Breakfast, 500 Denison Street, www.moorehouse-bnb.com, 785-776-5603
Anderson Bed and Breakfast, 1719 Fairchild, www.andersonbnb.com, 785-4994
Parkwood Inn and Suites, 505 S. 17th Street, www.parkwoodinnmanhattan.com, 877-816-5440 or 785-320-5440

National Corporate Chain Lodging:

Fairfield Inn by Marriott, 300 Colorado Street, 800-228-2800 or 785-539-2400
Four Points by Sheraton, 530 Richards Drive, 888-627-8649
Hilton Garden Inn, 410 S. 3rd Street, 785-532-9116
Holiday Inn at the Campus, 1641 Anderson Avenue, 800-962-0014 or 785-539-7531

Rates at all of the above vary and are subject to change based on availability. Please contact your option directly to confirm rates, taxes and benefits such as AARP or AAA discounts, and breakfast availability.

Restaurants in Manhattan:

All the following are locally owned and operated and each provide a unique dining experience in the Aggieville District, adjacent to campus:

Wahoo Fire and Ice Grill, 1101 Moro Street, www.wahoomanhattan.com, 785-320-7242
Bluestem Bistro, 1219 Moro Street, <http://bluestembistro.com>, 785-587-8888
Taco Lucha, 1130 Moro Street, www.tacoluchamanhattan.com, 785-320-5255
Rock-A-Belly Deli, 718 N. Manhattan Avenue, www.rockabellydeli.com, 785-539-8033
Varsity Donuts, 704 N. Manhattan Avenue, <http://www.facebook.com/varsitydonuts>, 785-539-7654

For more information about the above options or other lodging and restaurants in Manhattan, go to www.manhattancvb.org



**BRANCHING OUT IN THE LITTLE APPLE
2014 KS AAUW ANNUAL MEETING
APRIL 12, 2014**



A bright shiny apple of opportunity awaits you at the 2014 Kansas AAUW Annual Meeting on **Saturday, April 12 in Manhattan.**

WHERE: K-State Univ. Leadership Studies Building

WHEN: April 12, 8:30AM to 3:00PM.

COST: \$25 –includes lunch & refreshment by local favorite Radina’s Coffeehouse and Roastery, all sessions and materials. Free registration is available to those not eating the catered lunch and refreshments.

REGISTRATION IS DUE TUESDAY, APRIL 1.

You’ll be welcomed by City Commissioner Usha Reddi and hear keynoter Kansas State University First Lady and Associate Dean for Research and Graduate Programs in the College of Engineering Noel Schultz speak on recruiting young members. The theme “Branching Out in the Little Apple” focuses on membership development, and National AAUW representative Claudia Richards will engage participants in a workshop on this important topic.

DIRECTIONS: The Leadership Studies Building is located on the Kansas State University Campus. To find its exact location go to www.k-state.edu/maps/. It is building 54, P-16 on the print map option. Parking is free.

For more information about the Annual Meeting and how to get involved, contact Manhattan Branch Planning Committee Chair Olivia Collins at ocollins4662@gmail.com

**BRANCHING OUT IN THE LITTLE APPLE REGISTRATION FORM
2014 KS AAUW ANNUAL MEETING - APRIL 12**



Name _____

Branch _____

Address _____
Street/P.O. City State Zip

Please indicate your status as an AAUW member for the credential information by checking all the following designations appropriate to you.

- | | | |
|---|---|--|
| <input type="checkbox"/> Branch Delegate | <input type="checkbox"/> Association Board Member | <input type="checkbox"/> 50 Year Member |
| <input type="checkbox"/> Alternate Delegate | <input type="checkbox"/> Branch President | <input type="checkbox"/> Student Affiliate |
| <input type="checkbox"/> Branch Member | <input type="checkbox"/> Kansas State Board | <input type="checkbox"/> University/College Member |
| <input type="checkbox"/> Member-At-Large | <input type="checkbox"/> Former State President | |

PLEASE NOTE ANY DIETARY RESTRICTIONS:

Registration due by April 1, 2014

COST: \$25.00 per attendee
(Includes snacks & lunch & materials)
Make checks payable to **AAUW Kansas**

Mail registration form and check to:
Carolyn Dwire
700 N. Washington
El Dorado, KS 67042

The Public Policy Report

Engage, engage, engage!--I have found that AAUW members want to engage in meaningful discussion about anything---and that includes our own STATE of THE STATE. I hope your branch sets aside time to not only catch up on your local news but also the direction of the state of Kansas. What should we be doing in terms of policies and actions in our own state to support AAUW efforts? Through discussion and thoughtful exchange, we get action suggestions for solutions. This is the beginning of true citizenship---what is your branch doing?

One of the best tools for membership, in my opinion, is making sure all members have at least three opportunities to speak ---this open discussion time on public policy in our state is perfect timing to get your branch talking, sharing and asking questions.

By the time you receive this mailing, who knows what the legislature has done. I can send you by email the AAUW tracking program which tells us the status of legislation. If you want that update, please contact me at vlehmke@st-tel.net so I may forward it to you.

AAUW WEBSITE: Your Every Question Answered: Advocacy How-to Guides

Please look up the aauw.org website. It is full of great aids that are tried and true. Such as the Advocacy How-To Guides. These are excellent resources to help you plan a forum or almost any event.

And then there is the SCREEN A MOVIE Program in a Box---what a great attraction for members plus start some great discussion. All at the AAUW website---aauw.org---under RESOURCES.

TAKE ACTION: How terrific to hear the President speak about Equal Pay in his State of the Union speech. That was a first! We must continue that cause by talking to your legislators, even your family and friends, that we need a fair pay act for all families. It is too late for the unemployment benefits to be extended but it is not too late to support the Fair Pay Act.

Regarding that theme and a related one concerning these challenging times, you might read *Hutchinson News* series called *The Face of Food Stamps*---it is outstanding, written by two women. Our own AAUW scholar, Dr. Mariah Ehmke, ag economist at the



University of Wyoming was quoted in the series. Mariah is from Stafford County. Here is the link:

<http://kansasagland.com/images/foodstamps.pdf>

EQUAL PAY DAY:

Equal Pay Day is the symbolic day when women's earnings finally catch up to men's earnings from the previous year. Thanks to the gender pay gap, it takes women an extra three months of wages to make up that 23-percent difference. Equal Pay Day 2014 will fall on Tuesday, April 8, so mark your calendar!

Get the Pay Gap Numbers:

The Simple Truth about the Gender Pay Gap 2013

Use the AAUW report on this year's gender wage gap.

.Read it.

.Order it.

.Find your state pay gap.

Equal Pay Day 2014 is particularly significant because it falls between two legislative anniversaries that have helped women make progress in the workplace - but not quite enough progress. January 29, 2014, is the fifth anniversary of the Lilly Ledbetter Fair Pay Act, and July 2, 2014, is the 50th anniversary of the Civil Rights Act.

Contact me: vlehmke@st-tel.net or 620-397-2350 or just address something to Louise Ehmke, Healy, KS 67850.

Louise Carlson Ehmke
Public Policy Chair



New Kansas AAUW Board Member will be Elected at Annual Meeting

Program Vice President nominees to be announced.

If you are interested in this position, contact Bonnie at bonster79@hotmail.com today!

AAUW Kansas AAUW Bulletin
920 Lazy Creek Drive
Newton, KS 67114-8909

BULK RATE
U.S. POSTAGE
PAID
Permit No. 9
Ottawa, KS
66067

AAUW - Advancing equity for women and girls through advocacy, education, philanthropy and research.

AAUW Action Fund Mission

The AAUW Action Fund advances equity for women and girls through member activism and voter mobilization.

Since 1881, AAUW has been the nation's leading voice promoting education and equity for women and girls.

The AAUW Action Fund was established July 1, 2009, following a strategic restructuring of AAUW, the AAUW Educational Foundation, and the AAUW Leadership and Training Institute. The AAUW Action Fund supports AAUW's continuing goal of breaking through barriers for women and girls, and it does so through member activism and voter mobilization. Both organizations have a nationwide network of nearly 100,000 members, 1,000 branches, and 500 college/university institution partners.

A [briefing](#) on the AAUW website provides detailed information about the structure of AAUW, the AAUW Action Fund, AAUW branches, and members.

AAUW Action Fund
1111 Sixteenth St. NW
Washington, DC 20036
800/326-AAUW (2289)
connect@aauw.org

In principle and in practice, AAUW values and seeks a diverse membership. There shall be no barriers to full participation in this organization on the basis of gender, race, creed, age, sexual orientation, national origin, disability, or class.

KANSAS AAUW February 2014 Bulletin



EMAIL KS AAUW

aauwks@gmail.com

If you do not have email,
you will continue to receive your Bulletin via the
US Postal Service.

http://

WE HAVE A WEBPAGE AGAIN!
<http://aauw-ks.aauw.net/>

The website is under construction, so check back often as new items are added! Does your branch have a site we can link to the state's site? Let Terri know
sullivan.teresa@att.net